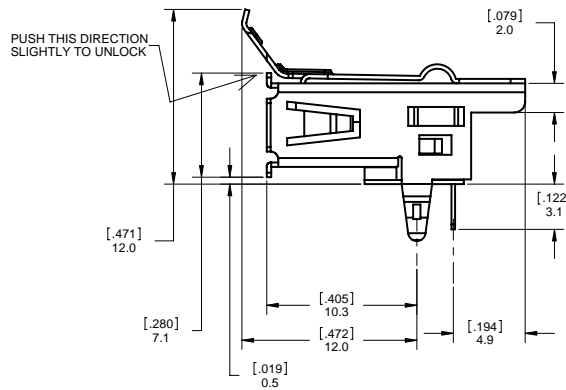
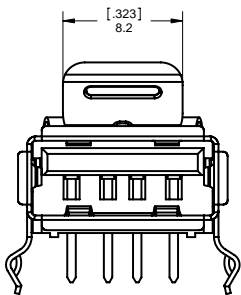
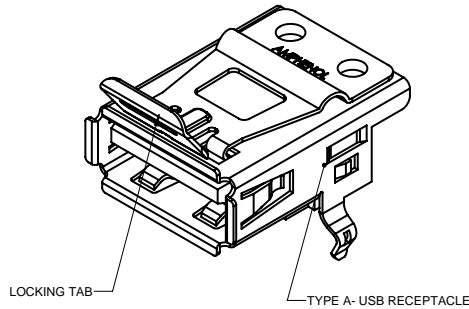
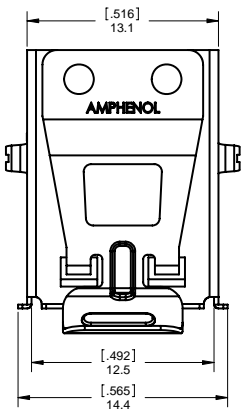


| |
|-----------------------------------|
| REV - DESCRIPT - DATE - APPRVD |
| A - RELEASE - OCT19/07 - A.G. |
| B - CHANGE DIMS - JUN30/08 - K.L. |
| |



NOTES:

1. MATERIAL:

- SHELL OF USB RECEPTACLE: NICKEL PLATED COPPER ALLOY
- HOUSING OF USB RECEPTACLE: HIGH TEMPERATURE THERMOPLASTIC, UL94V-0, COLOR - BLACK.
- CONTACTS OF USB RECEPTACLE: PHOSPHOR BRONZE, PLATING: 0.76 MICRONS (30 MICRO) GOLD, OVER NICKEL ON MATING AREA, TIN PLATING ON SOLDER TAILS.
- LOCKING TAB: STAINLESS STEEL

2. FEATURE: POSITIVE LOCK ON TYPE A, USB RIGHT ANGLE RECEPTACLE.

3. LOCKING FORCE: MIN. 50 N.

3. OPERATING TEMPERATURE: -40°C TO +85°C.

4. ALL COMPONENTS AND MATERIALS USED FOR CONNECTOR AND PACKAGING ARE RoHS COMPLIANT PER EU DIRECTIVE 2002/95/EC AND AMENDMENTS.

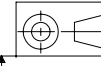
5. PART NUMBER FOR ORDER IS LUSB-A111-00.

6. SEE PAGE 2 OF 2 FOR PCB LAY-OUT AND PANEL CUT-OUT.

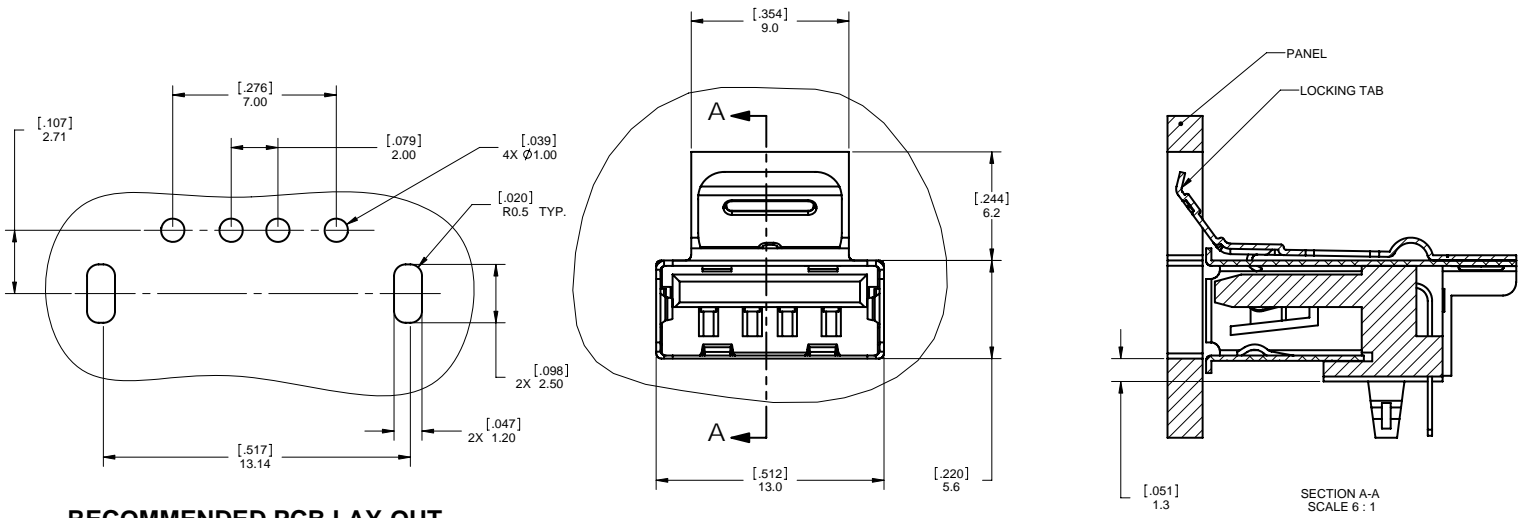


| | | | | | |
|--|--------------------------|----------|---|----------------------------|-----------------|
| UNLESS OTHERWISE SPECIFIED DIMENSIONS ARE IN MILLIMETER TOLERANCES ARE: DECIMALS XX ± .10 X ± .25 ANGLES ± 1° | APPROVALS | DATE | Amphenol Canada Corp. | | |
| | DRAWN LAWRENCE KIM | OCT19,07 | | | |
| MATERIAL AND FINISH | DESIGNED LAWRENCE KIM | OCT19,07 | TITLE USB A TYPE RECEPTACLE WITH POSITIVE LOCKING TAB RIGHT ANGLE TYPE | | |
| | CHECKED | | | | |
| REF. | QA APP'D | | SIZE C | DWG. NO. P-LUSB-A111-00 | REV. B |
| | IE APP'D | | SCALE 4:1 | PROJECT LUSB | SHEET 1 OF 2 |
| CODE IDENT. NO. | DWG APP'D A.GREEN | OCT19,07 | | | |

DO NOT SCALE DRAWING
THIS DOCUMENT CONTAINS PROPRIETARY INFORMATION AND SUCH INFORMATION MAY NOT BE DISCLOSED TO OTHERS FOR ANY PURPOSE OR USED FOR MANUFACTURING PURPOSES WITHOUT PERMISSION FROM AMPHENOL CANADA CORP.



| |
|-----------------------------------|
| REV - DESCRIPT - DATE - APPRVD |
| A - RELEASE - OCT 19,07 - AG |
| B - UPDATE DIMS - JUN30/08 - K.L. |



RECOMMENDED PCB LAY-OUT

RECOMMENDED PANEL CUT-OUT



| | | | | |
|---|--|-----------------------|----------|--|
| UNLESS OTHERWISE SPECIFIED DIMENSIONS ARE IN MILLIMETER TOLERANCES ARE: | | APPROVALS | DATE | Amphenol Canada Corp. |
| DECIMALS .XX ± .10 .X ± .25 | | DRAWN LAWRENCE KIM | OCT19,07 | |
| ANGLES ± 1° | | DESIGNED LAWRENCE KIM | OCT19,07 | TITLE USB A TYPE RECEPTACLE WITH POSITIVE LOCKING TAB RIGHT ANGLE TYPE |
| MATERIAL AND FINISH | | CHECKED | | |
| REF. | | QA APP'D | | |
| CODE IDENT. NO. | | IE APP'D | | SIZE C |
| | | DWG APP'D A.GREEN | OCT19,07 | DWG. NO. P-LUSB-A111-00 |
| | | | | REV. B |
| | | | | SCALE 5:1 |
| | | | | PROJECT LUSB |
| | | | | SHEET 2 OF 2 |

DO NOT SCALE DRAWING
THIS DOCUMENT CONTAINS PROPRIETARY INFORMATION AND SUCH INFORMATION MAY NOT BE DISCLOSED TO OTHERS FOR ANY PURPOSE OR USED FOR MANUFACTURING PURPOSES WITHOUT PERMISSION FROM AMPHENOL CANADA CORP.

