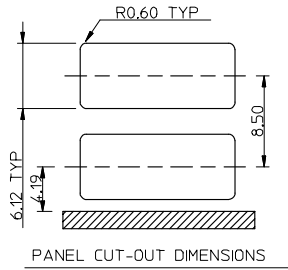
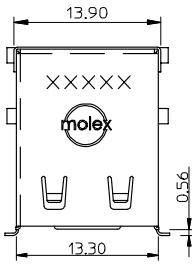
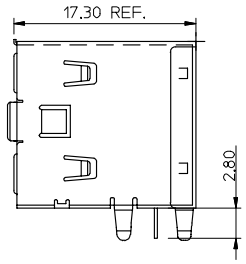
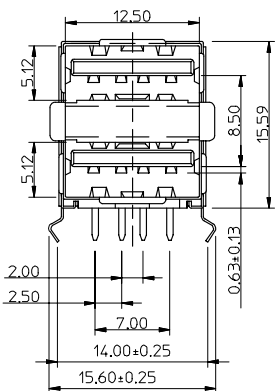
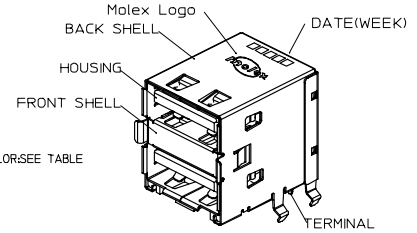


7 6 5 4 3 2 1

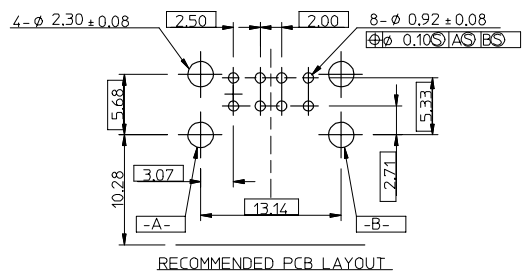


NOTE :

- MATERIAL : HOUSING :POLYESTER(PBT),GLASS FIBER FILLED, UL94-V0,COLOR:SEE TABLE
TERMINAL :PHOSPHOR BRONZE
METAL SHELL :FRONT SHELL:SUS 304
BACK SHELL:SPCC
- PLATING :
TERMINAL :
CONTACT AREA :SEE TABLE
SOLDER TAIL :FINISH ALLOY,THICKNESS-75 MICRONCH MN/19 MICROMETER MIN.
UNDER PLATE :NICKEL(IN),THICKNESS-50 MICRONCH MN/127 MICROMETER MIN.
METAL SHELL :TIN PLATING,THICKNESS-100 MICRONCH MN/2.54 MICROMETER MIN.
UNDER PLATE :NICKEL (IN),THICKNESS-50 MICRONCH MN/127 MICROMETER MIN.
- RECOMMENDED PCB THICKNESS :1.60 +/- 0.05mm
- PRODUCT SPECIFICATION:REFER TO PS-67298-001
- TEST SUMMARY:REFER TO TS-67298-008
- PACKAGING:REFER TO PK-67298-003
- THE HOUSING MATERIAL IS NOT FOR IR REFLOW PROCESS OR SURFACE MOUNTING COMPATIBLE PROCESS.
- LEAD FREE AND ROHS COMPLIANCE PRODUCT
- WEEK CODE XXXXX



P/N	COLOR	CONTACT PLATING
67298-3090	BLACK	GOLD FLASH
67298-4090	WHITE	GOLD FLASH
67298-3091	BLACK	30 MICRO INCH
67298-4091	WHITE	30 MICRO CHEN



L/F FOR 67298 EC NO: SH200503297 DRWN: CHEN12 2005/05/06 CHKD: 2005/05/10 APPR: WWSCHANG 2005/05/10 REV DESCRIPTION	QUALITY SYMBOLS	GENERAL TOLERANCES (UNLESS SPECIFIED) <table border="1"> <thead> <tr> <th></th> <th>mm</th> <th>INCH</th> </tr> </thead> <tbody> <tr> <td>4 PLACES</td> <td>±---</td> <td>±---</td> </tr> <tr> <td>3 PLACES</td> <td>±---</td> <td>±---</td> </tr> <tr> <td>2 PLACES</td> <td>± 0.25</td> <td>±---</td> </tr> <tr> <td>1 PLACE</td> <td>± 0.25</td> <td>±---</td> </tr> </tbody> </table> ANGULAR ± 3 ° DRAFT WHERE APPLICABLE MUST REMAIN WITHIN DIMENSIONS		mm	INCH	4 PLACES	±---	±---	3 PLACES	±---	±---	2 PLACES	± 0.25	±---	1 PLACE	± 0.25	±---	DIMENSION STYLE MM ONLY	SCALE	DESIGN UNITS METRIC	THIRD ANGLE PROJECTION
			mm	INCH																	
	4 PLACES		±---	±---																	
	3 PLACES		±---	±---																	
2 PLACES	± 0.25	±---																			
1 PLACE	± 0.25	±---																			
DRAWN BY IVY-LIN DATE 2005/03/11	TITLE																				
CHECKED BY ALL IN DATE 2005/04/01																					
APPROVED BY WWSCHANG DATE 2005/04/01	MATERIAL NO. SEE TABLE	DOCUMENT NO. SD-67298-008	MOLEX INCORPORATED																		
	SIZE A4	THIS DRAWING CONTAINS INFORMATION THAT IS PROPRIETARY TO MOLEX INCORPORATED AND SHOULD NOT BE USED WITHOUT WRITTEN PERMISSION				SHEET NO. 1 OF 1															

6 5 4 3 2 1