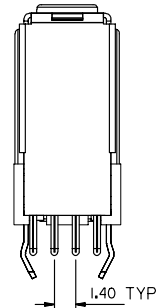
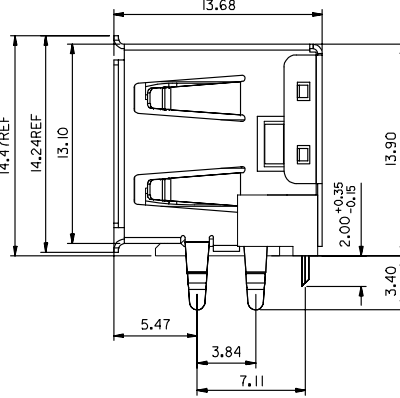
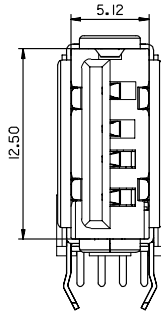
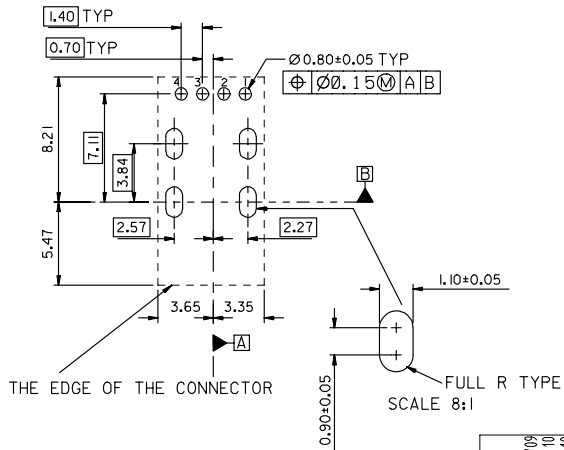
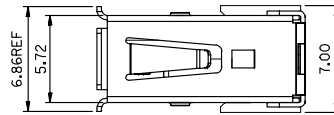
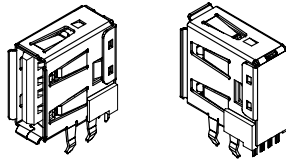


10 9 8 7 6 5 4 3 2 1

NOTES :

1. MATERIAL :
 - HOUSING : HIGH TEMPERATURE NYLON ,GLASS FIBER, UL94-V0 ,COLOR: BLACK
 - TERMINAL : PHOSPHOR BRONZE
 - METAL SHELL : COPPER ALLOY
2. PLATING :
 - TERMINAL :
 - (a) GOLD FLASH.
 - (b) GLOD (Au), THICKNESS = 30 MICROINCH/0.76 MICROMETER
 - SOLDER TAIL : PURE TINISH), THICKNESS= 75 MICROINCH /1.9 MICROMETER
 - UNDER PLATE : NICKEL (Ni), THICKNESS= 50 MICROINCH/1.27 MICROMETER
 - METAL SHELL :
 - PURE TINISH), THICKNESS=50-100MICROINCH/1.27-2.54MICROMETER.
 - UNDER PLATE : NICKEL (Ni) , THICKNESS= 50 MICROINCH/1.27 MICROMETER
- 3 RECOMMENDED PCB THICKNESS : 1.20±0.05mm & 1.60±0.05mm
- 4 PRODUCT SPECIFICATION : REFER TO PS-89485
- 5 PACKAGING SPECIFICATION : REFER TO PK-67329-001



PART NUMBER LEGEND:

| P/N | CONTACT PLATING |
|------------|-----------------------------------|
| 67329-8000 | GOLD FLASH |
| 67329-8001 | 0.76 MICROMETER/30 MICROINCH GOLD |

| | |
|-------------|------------------------|
| NEW RELEASE | 2005/12/09 |
| EC NO.: | DRWHP01AN 2006/01/10 |
| | CHIKCHAPREY 2006/01/10 |
| | APPR:HWANG |
| DESCRIPTION | |
| REV | |

| | |
|-----------------|--|
| QUALITY SYMBOLS | GENERAL TOLERANCES (UNLESS SPECIFIED) |
| ▽=0 | |
| ▽=0 | |
| | mm INCH |
| | 4 PLACES ± --- ± --- |
| | 3 PLACES ± --- ± --- |
| | 2 PLACES ± 0.25 ± --- |
| | 1 PLACE ± 0.25 ± --- |
| | ANGULAR ± 3 ° |
| | DRAFT WHERE APPLICABLE MUST REMAIN WITHIN DIMENSIONS |

| | |
|-----------------|------------|
| DIMENSION STYLE | MM ONLY |
| DRAWN BY | DATE |
| QIANHUIPING | 2005/12/09 |
| CHECKED BY | DATE |
| HARVEY | 2005/12/09 |
| APPROVED BY | DATE |
| GARY | 2005/12/09 |
| MATERIAL NO. | |
| 67329-800* | |
| SIZE | A3 |

| | |
|---|---|
| SCALE | 4:1 |
| DESIGN UNITS | METRIC |
| THIRD ANGLE PROJECTION | |
| TITLE | USB A UPRIGHT CONN. FLANGE OUT TYPE LEAD-FREE |
| Molex | MOLEX INCORPORATED |
| DOCUMENT NO. | SD-67329-801 |
| SHEET NO. | 1 OF 1 |
| THIS DRAWING CONTAINS INFORMATION THAT IS PROPRIETARY TO MOLEX INCORPORATED AND SHOULD NOT BE USED WITHOUT WRITTEN PERMISSION | |

9 8 7 6 5 4 3 2 1