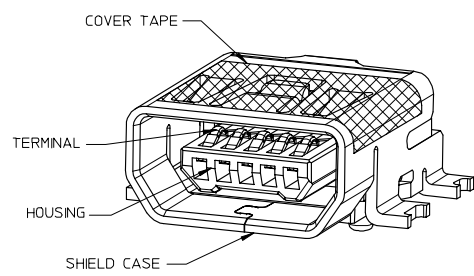
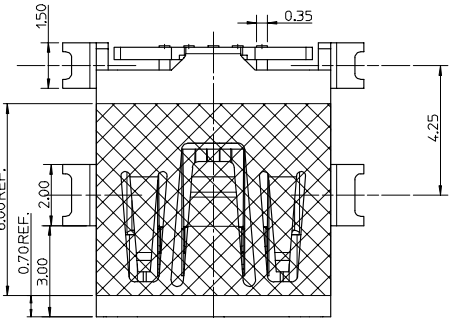
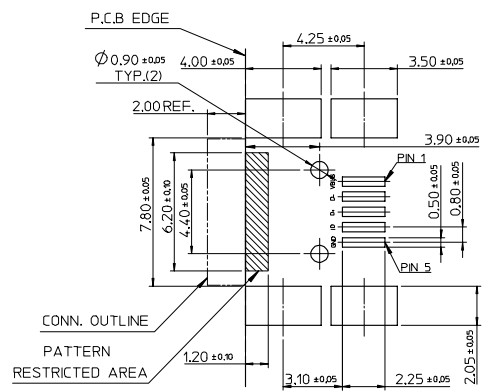
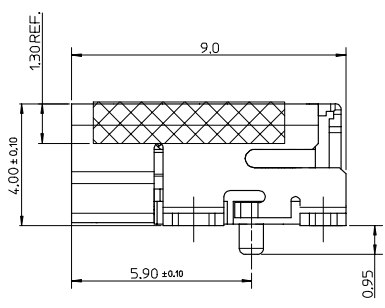
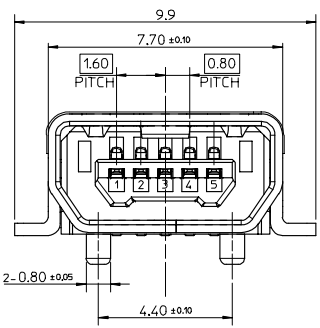


10 9 8 7 6 5 4 3 2 1



NOTE :

- MATERIAL :
 HOUSING : NYLON GLASS FILLED , GRAY,UL94V-0
 TERMINAL : COPPER ALLOY THICKNESS = 0.2 MM
 SHIELD CASE : COPPER ALLOY THICKNESS = 0.4 MM
- PLATING :
 TERMINAL:
 CONTACT AREA : GOLD 0.75 MICROMETER MINIMUM.
 SOLDER TAIL AREA : PURE TIN 3.8 MICROMETER MINIMUM.
 UNDER PLATING : NICKEL 1.25 MICROMETER MINIMUM.
 SHIELD CASE :
 PURE TIN 1-3 MICROMETER MINIMUM.
 UNDER PLATING : NICKEL 1.0 MICROMETER MINIMUM.
- TAIL & NAIL COPLANARITY 0.1 mm MAXIMUM.



COMPONENT	REMARK
67803-8020	WITH COVER TAPE
67803-8021	WITHOUT COVER TAPE

REVISE EC NO. SH2006-0852 DRW: X. SONG 2006/06/30 CHK: C. WANG 2006/07/04 APPR: J. CHEN 2006/07/05	QUALITY SYMBOLS ▽=0 ▽=0	GENERAL TOLERANCES (UNLESS SPECIFIED)		DIMENSION STYLE MM ONLY		SCALE 8:1	DESIGN UNITS METRIC	THIRD ANGLE PROJECTION		
		4 PLACES ± --- ± ---	3 PLACES ± --- ± ---	2 PLACES ± 0.25 ± ---	1 PLACE ± 0.25 ± ---	ANGULAR ± 3 °	DRAWN BY JACK 2004/11/23	DATE 2004/11/23	CHECKED BY HARVEY 2004/11/23	DATE 2004/11/23
		DRAFT WHERE APPLICABLE MUST REMAIN WITHIN DIMENSIONS		SEE TABLE	MATERIAL NO.	DOCUMENT NO.	TITLE USB SERIES MINI-AB REC. ASSY SMT TYPE (LEAD-FREE)			
				SIZE A3	THIS DRAWING CONTAINS INFORMATION THAT IS PROPRIETARY TO MOLEX INCORPORATED AND SHOULD NOT BE USED WITHOUT WRITTEN PERMISSION					

RECOMMENDED P.C.B. PATTERN LAYOUT



MOLEX INCORPORATED

9 8 7 6 5 4 3 2 1