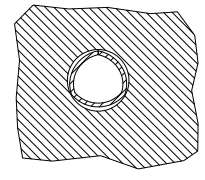
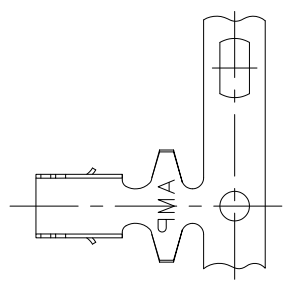


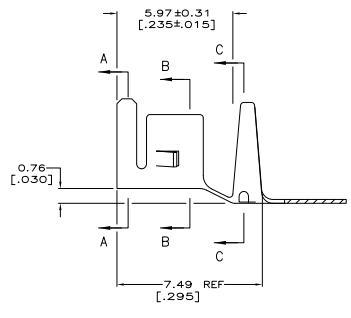
THIS DRAWING IS UNPUBLISHED
 ALL RIGHTS RESERVED

REV	DATE	DESCRIPTION	BY	APP
00				
C2		REVISED PER ECO-11-004820	11MMR11	RK HMR

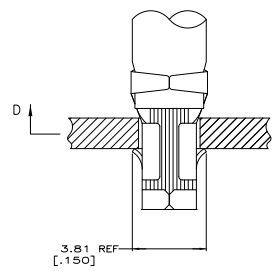


SECTION D-D

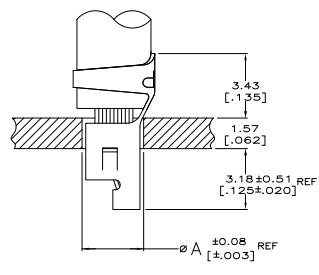
- 1 PARTS COMPLY WITH AMP SOLDERABILITY SPEC 109-11-3.
 - 2 WIRE RANGE: 3-5.5 mm² [12-10 AWG].
 - 3 INSULATION DIAMETER: 5.08 [.200] MAX.
 - 4 DIMENSIONS IN BRACKETS ARE IN INCHES.
- ▲ 0.00508 [.000200] MIN BRIGHT TIN-LEAD.
 ▲ 0.00508 [.000200] MIN HALT TIN.



SECTION A-A

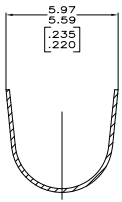
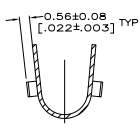
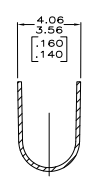


SECTION B-B



SECTION C-C

3.76	[.148]	10
3.18	[.125]	12
A		AWG



THIS DRAWING IS A CONTROLLED DOCUMENT.		DESIGNED BY: [] DRAWN BY: [] CHECKED BY: [] APPROVED BY: []	DATE: [] SIZE: [] SHEET: [] OF []
DIMENSIONS: [] UNITS: []		CUSTOMER DRAWING: []	PART NO.: []

METRIC
 TE Connectivity
 TERMINAL, AMP-IN

▲	3-794037-1
▲	794037-1
▲	FINISH
▲	PART NO.