

4

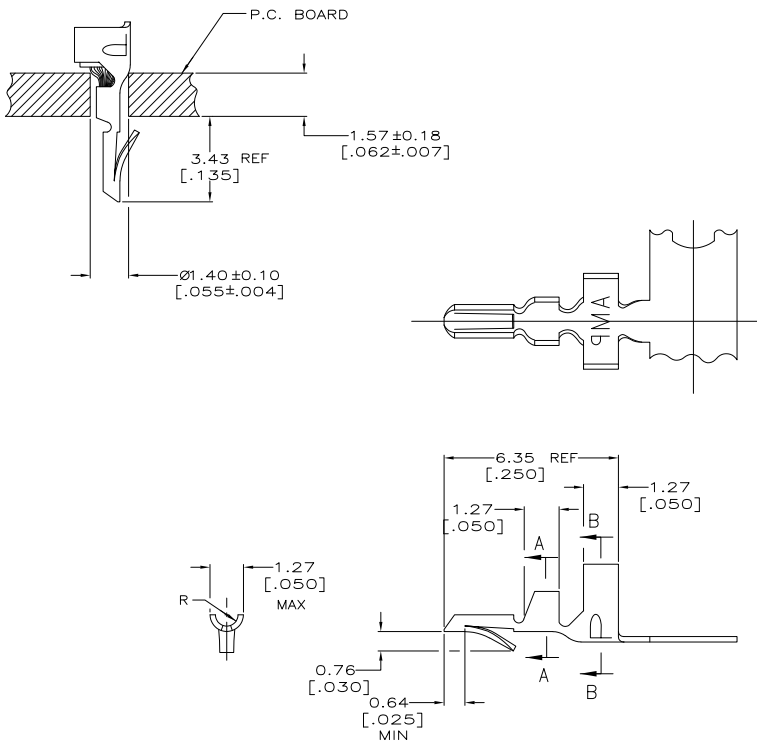
3

2

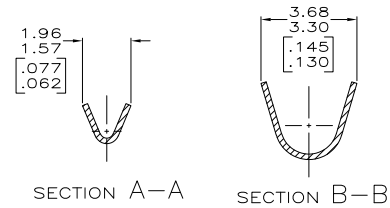
1

THIS DRAWING IS UNPUBLISHED. RELEASED FOR PUBLICATION  
 © COPYRIGHT - By - ALL RIGHTS RESERVED.

LOC	DIST	REVISIONS			
P	LTR	DESCRIPTION	DATE	MIN	APD
CM	00				
	N1	REVISED PER ECO-11-004820	21MAR11	RK	HMR



- PARTS COMPLY WITH AMP SOLDERABILITY SPEC 109-11-3.
- PARTS CAPABLE OF BEING APPLIED BY AMPOMATOR.
- WIRE RANGE: 0.12-0.4mm<sup>2</sup> (26-22 AWG).
- INSULATION RANGE: 1.52-2.54 [.060-.100] DIA  
 △ 0.00508 [.000200] MIN BRIGHT TIN-LEAD.
- DIMENSIONS IN BRACKETS ARE IN INCHES.  
 △ 0.00508 [.000200] MIN BRIGHT TIN.



**METRIC**

△	0.20[.008] PHOS BRONZE	3-640108-1
△	0.20[.008] PHOS BRONZE	640108-1
FINISH	MATERIAL	PART NO.

THIS DRAWING IS A CONTROLLED DOCUMENT.		DRN	21AUG2003
DIMENSIONS: INCHES		S. CARPENTER	21AUG2003
OTHER DIMENSIONS: 0.13 [.005]		J. ELLIS	21AUG2003
MATERIAL: SEE TABLE		J. ELLIS	21AUG2003
FINISH: SEE TABLE		NAME	TE Connectivity
APPLICATION SPEC: 114-1016		PRODUCT SPEC	MINI AMP-IN
CUSTOMER DRAWING		SIZE	CAGE CODE
		A2	00779
		C=640108	RESTRICTED TO
		SCALE	10:1
		SHEET	1 of 1
		REV	N1