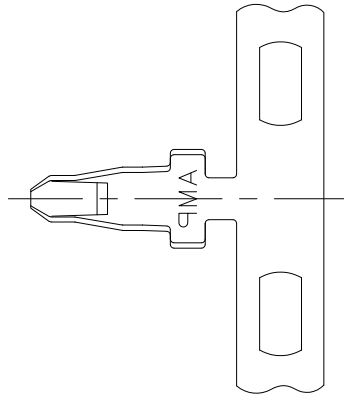
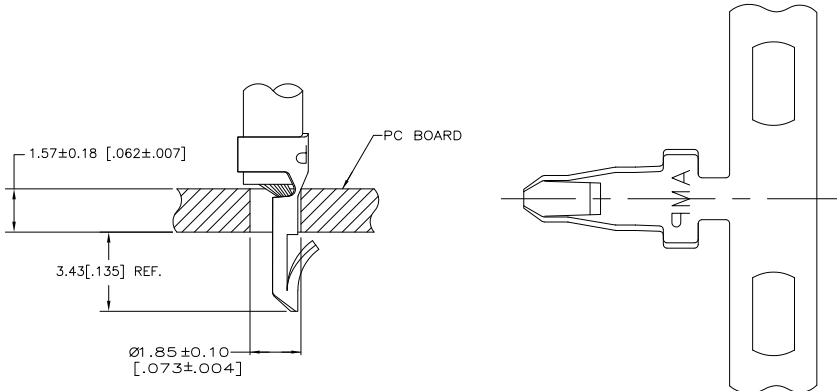
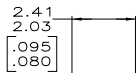
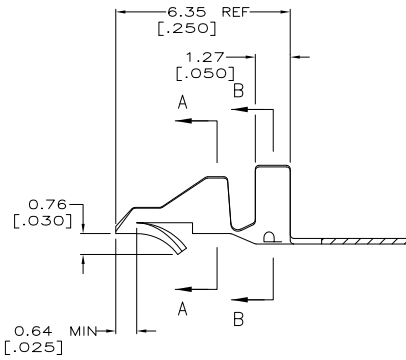
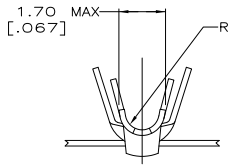


THIS DRAWING IS UNPUBLISHED. RELEASED FOR PUBLICATION
 © COPYRIGHT BY TYCO ELECTRONICS CORPORATION. ALL INTERNATIONAL RIGHTS RESERVED.

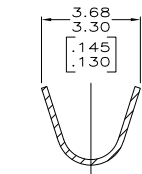
LOC	DIST	REVISIONS				
CM	00	P	LTR	DATE	BY	APP'D
		AB1	REVISED PER ECO-10-024400	01MAR11	JR	SM



- 1 PARTS COMPLY WITH AMP SOLDERABILITY SPEC 109-11-3.
- 2 PARTS COMPLY WITH AMP SOLDERABILITY SPEC 109-11-5.
- 3 PARTS COMPLY WITH AMP SOLDERABILITY SPEC 109-11-1.
- 5 CARRIER STRIP TO HAVE 1.52 [0.060] DIA PILOT HOLE.
- 6 0.00508 [0.000200] MIN BRIGHT TIN-LEAD.
- 7 0.00318 [0.000150] MIN MATTE TIN-LEAD OVER
0.00305 [0.000120] MIN MATTE COPPER.
- 8 0.00305 [0.000120] MIN TIN OVER
0.00102 [0.000040] MIN NICKEL.
- 9 WIRE RANGE: 0.3 - 0.9 mm² (22 - 18 AWG).
- 10 INSULATION RANGE: 1.52 - 2.79 [0.060 - .110] DIA.
- 11 DIMENSIONS IN BRACKETS ARE IN INCHES.
- 12 0.00508 [0.000200] MIN BRIGHT TIN.



SECTION A-A



SECTION B-B

METRIC

1	12	0.20[.008] PH BRZ	3-350566-1
3	6	0.20[.008] BRASS	350566-7
3	8	0.20[.008] BRASS	350566-5
2	8	0.20[.008] BRASS	350566-3
1	6	0.20[.008] PH BRZ	350566-1

OBSOLETE

NOTES	FINISH	MATERIAL	PART NO.
THIS DRAWING IS A CONTROLLED DOCUMENT.			
DIMENSIONS: INCHES DECIMALS: 0.0005 FRACTIONS: 1/64 ANGLES: 0.13 [0.005]		20AUG2003 S. CARPENTER 20AUG2003 J. ELLIS 20AUG2003 J. ELLIS 20AUG2003	
MATERIAL: SEE TABLE FINISH: SEE TABLE		Tyco Electronics Corporation Harrisburg, PA 17105-3608 MINI AMP-IN (TM)	
APPLICATION SPEC: 114-1016 WEIGHT: A2 CUSTOMER DRAWING		SIZE: 10:1 CASE CODE: 00779 DRAWING NO: C=350566 SCALE: 10:1 SHEET: 1 of 1 RESTRICTED TO: AB1	