

4

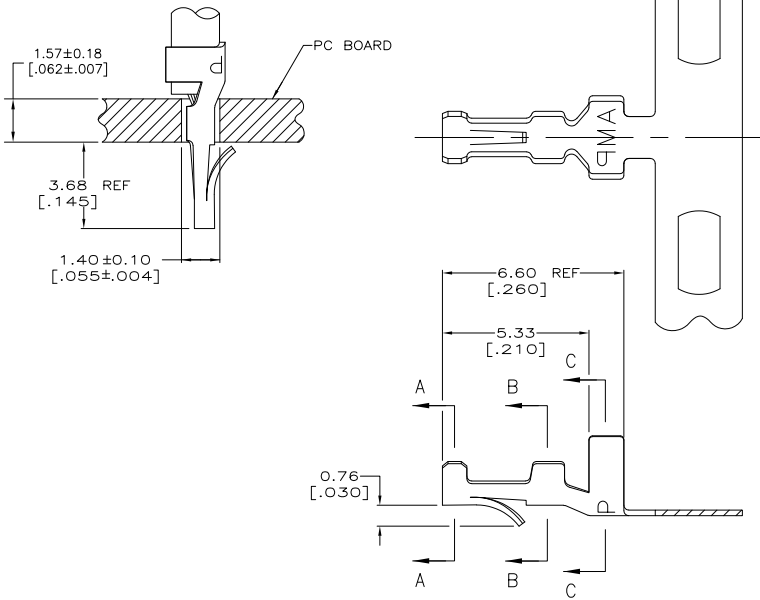
3

2

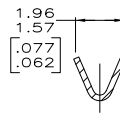
1

THIS DRAWING IS UNPUBLISHED. RELEASED FOR PUBLICATION. ALL RIGHTS RESERVED.

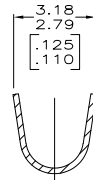
| LOC | DIST | REVISIONS | | | |
|-----|------|---------------------------|---------|-----|-----|
| P | LTR | DESCRIPTION | DATE | MIN | APD |
| CM | 00 | | | | |
| | P1 | REVISED PER ECO-11-004917 | 11MAR11 | RK | HMR |



- PARTS COMPLY WITH AMP SOLDERABILITY SPEC 109-11-3.
- PARTS CAPABLE OF BEING APPLIED BY AMPOMATOR.
- 0.00508 [.000200] MIN BRIGHT TIN-LEAD.
- 0.00381 [.000150] MIN BRIGHT TIN-LEAD OVER 0.00127 [.000050] MIN NICKEL.
- WIRE RANGE: 0.12 - 0.4 mm² (26 - 22 AWG).
- INSULATION RANGE: 1.02 - 2.54 [.040 - .100] DIA.
- DIMENSIONS IN BRACKETS ARE IN INCHES.
- 0.00508 [.000200] MIN BRIGHT TIN.



SECTION A-A, B-B



SECTION C-C

| | | | |
|------------|--------|-------------------|------------|
| MINI | ⚠ | 0.20[.008] PH BRZ | 3-640401-1 |
| MINI | ⚠ | 0.20[.008] PH BRZ | 640401-3 |
| MINI | ⚠ | 0.20[.008] PH BRZ | 640401-1 |
| APPLICATOR | FINISH | MATERIAL | PART NO |

METRIC

| | | | | |
|--|----------|-----------------------------|--------------------|------------------|
| THIS DRAWING IS A CONTROLLED DOCUMENT. | | DRN: S. CARPENTER 21AUG2003 | TE Connectivity | |
| DIMENSIONS: INCHES | | CHK: J. ELLIS 21AUG2003 | NAME: MINI AMP-IN™ | |
| TOLERANCES UNLESS OTHERWISE SPECIFIED: | | APP: J. ELLIS 21AUG2003 | RESTRICTED TO: - | |
| Ø PLG ± | Ø PLG ± | APPLICATION SPEC: 114-1016 | SIZE: A2 | CAGE CODE: 00779 |
| Ø PLG ± | Ø PLG ± | WEIGHT: C=640401 | DRAWING NO: 640401 | |
| Ø PLG ± | Ø PLG ± | FINISH: SEE TABLE | SCALE: 10:1 | |
| ANGLES ± | ANGLES ± | MATERIAL: SEE TABLE | SHEET: 1 of 1 | |
| MATERIAL: SEE TABLE | | CUSTOMER DRAWING | | REV: P1 |