

4

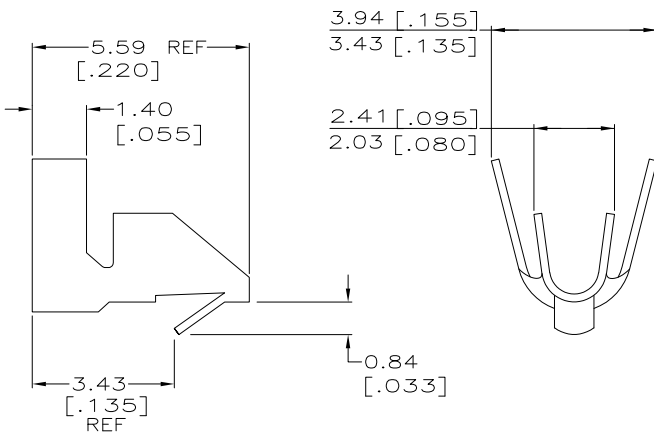
3

2

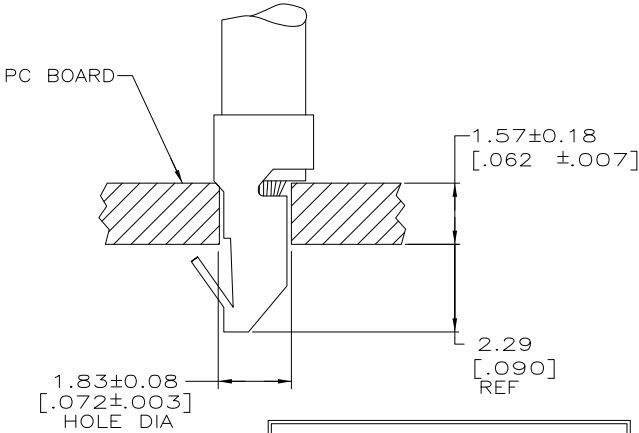
1

THIS DRAWING IS UNPUBLISHED. RELEASED FOR PUBLICATION
 © COPYRIGHT - BY TYCO ELECTRONICS CORPORATION. ALL RIGHTS RESERVED.

LOC	DIST	REVISIONS			
P	LTR	DESCRIPTION	DATE	DWN	APVD
CM	00	H2	REVISED PER ECO-10-024400	01MAR11	JR SM



- PARTS COMPLY WITH AMP SOLDERABILITY SPEC 109-11-3.
- WIRE RANGE: 0.3 - 0.9 mm² (22 - 18 AWG).
- INSULATION RANGE: 1.52 - 2.79 [.060 - .110] DIA.
- 0.00254 [.000100] MIN BRIGHT TIN-LEAD OVER 0.00203 [.000080] MIN MATTE COPPER.
- 0.00508 [.000200] MIN BRIGHT TIN-LEAD.
- DIMENSIONS IN BRACKETS ARE IN INCHES.
- FOR FOREIGN PRODUCTION ONLY.
- 4µm [.00016] MIN BRIGHT TIN PLATING.



	8	0.20[.008] PHOS BRONZE	3-770565-2
	8	0.20[.008] BRASS	3-770565-1
	4 7	0.20[.008] BRASS	770565-3
OBSOLETE	5	0.20[.008] PHOS BRONZE	770565-2
OBSOLETE	4	0.20[.008] BRASS	770565-1

THIS DRAWING IS A CONTROLLED DOCUMENT.		FINISH		MATERIAL		PART NUMBER	
DWN B. LEWIS 12-20-89		8		0.20[.008] PHOS BRONZE		3-770565-2	
CHK R. SWING 12-21-89		4 7		0.20[.008] BRASS		3-770565-1	
APVD W. LONG 12-21-89		5		0.20[.008] PHOS BRONZE		770565-2	
NAME MINI AMP-IN		4		0.20[.008] BRASS		770565-1	
PRODUCT SPEC							
APPLICATION SPEC							
WEIGHT		A3		00779 C-770565		RESTRICTED TO	
CUSTOMER DRAWING		SCALE 10:1		SHEET 1 OF 1		REV H2	

METRIC

AMP 1470-19 REV 31MAR2000

26OCT05 11:12am us019538

H:\dmmod\770565_1_c.dwg