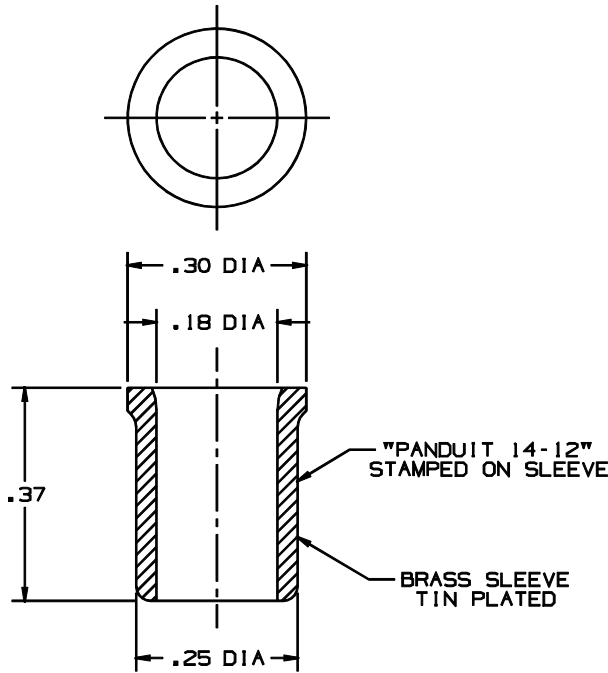


THIS COPY IS PROVIDED ON A RESTRICTED BASIS AND IS NOT TO BE USED IN ANY WAY DETRIMENTAL TO THE INTERESTS OF PANDUIT CORP.



NOTES: :

1. RECOMMENDED TOOL - CT-100 OR CT-200
2. FOR SOLID OR STRANDED COPPER WIRE.
3. COMBINATIONS #18 AWG- #10 AWG
4. LISTED, CERTIFIED
5. WIRE STRIP LENGTH : 1/2" + 1/32  
-0

WIRE COMBINATION CHART FOR WIRE JOINT J214-312

WIRE SIZE	NO. OF WIRES	NUMBER OF ADDITIONAL WIRES OF ONE SIZE			
		#18 AWG	#16 AWG	#14 AWG	#12 AWG
#18 AWG	1	3 to 11	2 to 6	1 to 4	0
	2	2 to 10	1 to 5	1 to 3	2
	3	1 to 9	1 to 4	1 to 3	2
	4	1 to 8	1 to 3	1 to 3	2
	5	1 to 7	1 or 2	1 or 2	0
	6	1 to 6	1	1 or 2	0
	7	1 to 5	1	1	0
	8	1 to 4	1	0	0
	9	1 to 3	1	0	0
	10	1 or 2	0	0	0
	11	1	0	0	0
#16 AWG	1	2 to 9	1 to 6	1 to 3	0
	2	1 to 5	1 to 5	1 to 3	2
	3	1 to 4	1 to 4	1 or 2	1 or 2
	4	1 to 3	1 to 3	1 or 2	1
	5	1 or 2	1 or 2	1	1
	6	1	1	1	0
#14 AWG	1	1 to 7	1 to 6	1 to 3	2
	2	1 to 6	1 to 4	1 or 2	1
	3	1 to 4	1 or 2	1	1
	4	1	0	0	0
#12 AWG	1	0	3 to 5	2 to 3	2
	2	2 to 4	2 to 3	1	1
	3	0	0	0	0

A41004\_04

4	1/01	SAB		FILE SPEC. WAS N41004_PCD_03							 TINLEY PARK, ILLINOIS  NON-INSULATED WIRE JOINT J214-312		
3	7/96	JB		ORIGINAL FILE SPEC. WAS A41004.2 ADDED NOTE #5									
2	1/88	CK		ADDED COPPER WIRE, CERTIFIED									
1	9-87	DM		MAT'L WAS STEEL / REDRAWN ON CAD									
REV	DATE	BY	CHK	DESCRIPTION	ECN	PM	CUST	SUP	APP	DRAWN BY DSM		CHK'D	SCALE 4X