

4

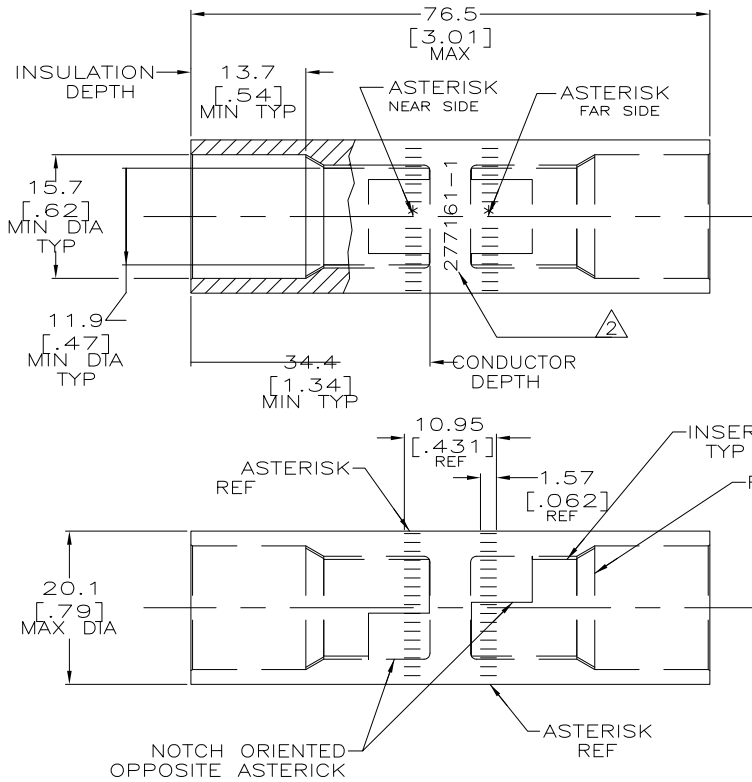
3

2

1

THIS DRAWING IS UNPUBLISHED. RELEASED FOR PUBLICATION
 © COPYRIGHT - BY TYCO ELECTRONICS CORPORATION. ALL RIGHTS RESERVED.

LOC	DIST	REVISIONS			
P	LTR	DESCRIPTION	DATE	DWN	APVD
G	86	K	REV PER ECR 08-004875	26FEB08	JR MS



1 WIRE INSULATION DIA: 12.70 - 13.97
 [.500] [.550]

△ STAMP " 277161-1 AMP 2/0 AL-1/0 CU"
 APPROX AS SHOWN.

SPLICE: COPPER ASTM B-187 ANNEALED TIN PL 0.00381 [.000150] MIN THK PER ASTM B545	
INSERT & FUNNEL: BRASS ASTM B36 NICKEL PL SAE AMS QQ-N-290A, DATED JULY 2000, 0.00254 [.000100] MIN THK	277161-1
MATERIAL & FINISH	PART NUMBER

THIS DRAWING IS A CONTROLLED DOCUMENT.		DWN DK SCHRUM 18NOV96	Tyco Electronics Tyco Electronics Corporation Harrisburg, PA 17105-3608	
DIMENSIONS: mm(INCHES)		CHK WJ VOCKROTH 19NOV96	NAME	
TOLERANCES UNLESS OTHERWISE SPECIFIED:		APVD JL MECKLEY 19NOV96	PRODUCT SPEC	
0 PLC ± -		108-11011		
1 PLC ± -		APPLICATION SPEC		
2 PLC ± -		114-2134		
3 PLC ± -		SIZE A3	CAGE CODE 00779	DRAWING NO C-277161
4 PLC ± -		WEIGHT 107.7 ± GRAMS		RESTRICTED TO
MATERIAL SEE TABLE	FINISH SEE TABLE	CUSTOMER DRAWING		SCALE 2:1 SHEET 1 OF 1 REV K

AMP 1470-19 REV 31MAR2000