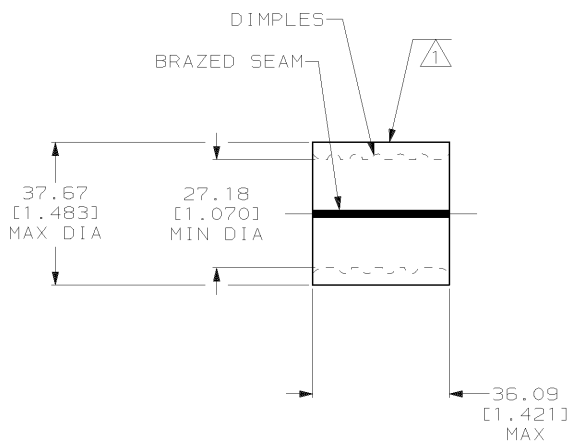


THIS DRAWING IS UNPUBLISHED. RELEASED FOR PUBLICATION, 19 .
 © COPYRIGHT 19 BY AMP INCORPORATED. ALL INTERNATIONAL RIGHTS RESERVED.

LOC	DIST	P	F	ZONE	LTR	DESCRIPTION	DATE	APPD
G	14					REV PER 063A-0435-02	30SEP02	MS

METRIC
 DIMENSIONS LISTED IN mm [INCHES]



AMP WIRE RANGE	UL E13288 Listed
500-600 MCM STRANDED	500-600 MCM STRANDED
SP LR7189 Certified	MILITARY P/N AND CLASS
500-600 MCM STRANDED	NOT APPLICABLE

- 1 STAMP AMP W* 500-600 MCM APPROX AS SHOWN
- 2 MATERIAL THK: 4.52^{+0.10} [0.178^{+0.004}]
- 3 STAMP FOR MANUFACTURING LOCATION OR CODE PERMISSIBLE.

AMP INCORPORATED CUSTOMER SERVICE SYSTEMS		MAX RECOMMENDED OPERATING TEMPERATURE: 170°C MAX	322278 PART NO
FOR ADDITIONAL PRODUCT INFORMATION OR COPIES OF DRAWINGS AND TECHNICAL DOCUMENTS	PRODUCT INFORMATION CENTER 1-800-522-6752	VOLTAGE RATING: NOT APPLICABLE	AMP AMP Incorporated Harrisburg, PA 17105-3608 NAME SPLICE, PARALLEL, SOLISTRAND, WIRE SIZE: 500-600 MCM
FOR APPLICATION TOOLING INFORMATION	TOOLING ASSISTANCE CENTER 1-800-722-1111	CIRCULAR MIL AREA: 242.2-304.0mm ² [478-600] MCM STRANDED	
FOR ORDER ENTRY	1-800-526-5142	THIS DRAWING IS A CONTROLLED DOCUMENT FOR AMP INCORPORATED. IT IS SUBJECT TO CHANGE AND THE CONTROLLING ENGINEERING ORGANIZATION SHOULD BE CONTACTED FOR THE LATEST REVISION.	SIZE B 00779 CAGE CODE C=322278 DRAWING NO C=322278 SCALE 1:1 SHEET 1 OF 1
DO NOT SCALE PRINT. UNLESS SPECIFIED DIMENSIONS IN INCHES TOLERANCES ON: 1. PLC DEC ± 0.201.0081 2. PLC DEC ± - ANGLES ± - MATERIAL COPPER PER ASTM B-152 ANNEALED FINISH TIN PLATE 0.00254 [0.00100] MIN THK PER MIL-T-10727		DR 5/6/93 DK SCHRUM CHK 5/14/93 AJ KAUFMAN APPD 5/14/93 RE ROSEB CR RHODAS PRODUCT SPEC - APPLICATION SPEC - WEIGHT -	

AMP 1470-15 REV 3-92 06 MAY 1993 07:48:57 AMP26463 <US128A>DEPT1123>DWG1123>U.SOL1STRAND>U.PARALLEL-SPLICE

CUSTOMER DRAWING