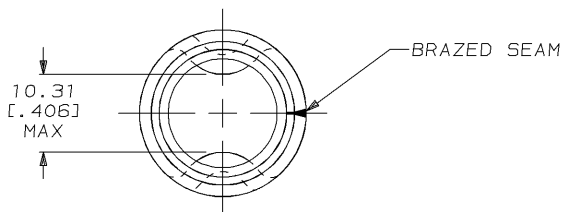
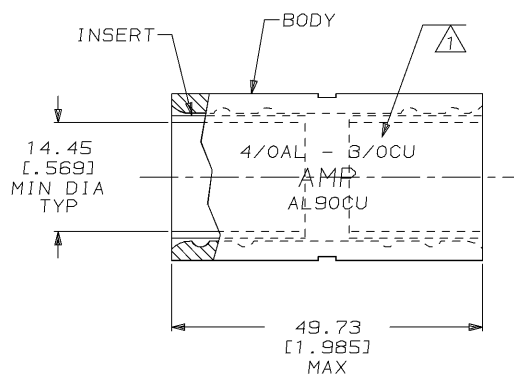
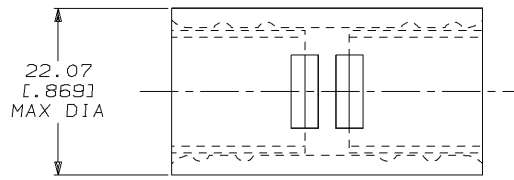


THIS DRAWING IS UNPUBLISHED. RELEASED FOR PUBLICATION, 19 .
 © COPYRIGHT 19 BY AMP INCORPORATED. ALL INTERNATIONAL RIGHTS RESERVED.

LOC	DIST	ZONE	LTR	DESCRIPTION	DATE	APPD
G	86			REVISED PER 0720-0160-94	6/23/94	AJK

METRIC
 DIMENSIONS LISTED IN mm [INCHES]

⚠ STAMP CHARACTERS APPROX AS SHOWN
 2 MATERIAL THK: 2.59 ± 0.05 [.102 ± .002]



BODY: COPPER 1.83 ± 0.10 [.072 ± .004] ASTM B-152 TIN PL 0.00254 [.000100] MIN THK PER MIL-T-10727	52019
INSERT: BRASS MIL-C-50 TIN PL 0.00762 [.000300] MIN EXT THK PER MIL-T-10727	

AMP INCORPORATED CUSTOMER SERVICE SYSTEMS		MAX RECOMMENDED OPERATING TEMPERATURE: 170° MAX	AMP AMP Incorporated Harrisburg, PA 17105-3608
FOR ADDITIONAL PRODUCT INFORMATION OR COPIES OF DRAWINGS AND TECHNICAL DOCUMENTS 1-800-522-6752	PRODUCT INFORMATION CENTER 1-800-522-6752	VOLTAGE RATING: NOT APPLICABLE	
FOR APPLICATION TOOLING INFORMATION 1-800-722-1111	TOOLING ASSISTANCE CENTER 1-800-722-1111	WIRE CROSS SECTIONAL AREA RANGE: 96.3-117.0mm² [190,000-231,100] CIR MILS SOLID OR STRANDED	NAME WIRE SPLICE, COPALUM™ - STRANDED/SOLID, WIRE SIZE: 4/OAL-3/OCU
FOR ORDER ENTRY 1-800-526-5142	THIS DRAWING IS A CONTROLLED DOCUMENT FOR AMP INCORPORATED. IT IS SUBJECT TO CHANGE AND THE CONTROLLING ENGINEERING ORGANIZATION SHOULD BE CONTACTED FOR THE LATEST REVISION.	FINISH TIN PLATE 0.00254 [.000100] MIN THK PER MIL-T-10727	SIZE B 00779 SCALE 2:1
		DO NOT SCALE PRINT. UNLESS SPECIFIED DIMENSIONS IN () ARE IN INCHES TOLERANCES ON: 1. DIMENSIONS ± 0.201 (0.008) 2. PLC DEC ± - 3. PLC DEC ± - ANGLES ± -	DR 2/5/94 DK SCHRIER CHK 2/7/94 AJ KAUFMAN APPD 2/7/94 RE ROSE APPD 2/7/94 JL MECKELY PRODUCT SPEC - APPLICATION SPEC - WEIGHT -
		MATERIAL COPPER PER ASTM B-152 ANNEALED	DRAWING NO C=52019 SHEET 1 OF 1

AMP 1470-15 REV 3-92
 23-JUN-94 10:46:12 amp26463 /files/dept1123/dwg1123/u.copalum/u.but

CUSTOMER DRAWING