

4

3

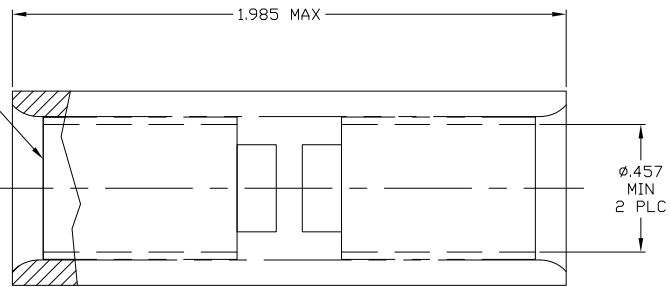
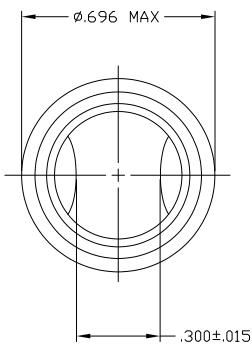
2

1

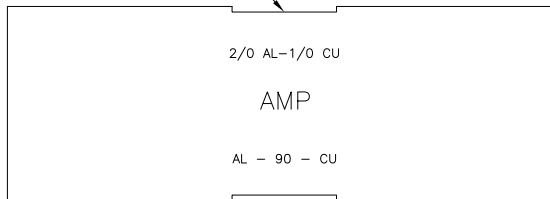
THIS DRAWING IS UNPUBLISHED. RELEASED FOR PUBLICATION
 © COPYRIGHT BY TYCO ELECTRONICS CORPORATION. ALL INTERNATIONAL RIGHTS RESERVED.

LOC	DIST	REVISIONS		
P	LTR	DESCRIPTION	DATE	BY
F		REV PER ECO 10-016294	13AUG10	PY JW

INSERT
 MAT'L: BRASS PER ASTM-B-19
 FINISH: TIN PLATED .00030 MIN THK
 PER ASTM-B-545 OR 539



BODY
 MAT'L: COPPER PER ASTM-B-152
 FINISH: TIN PLATED
 PER ASTM-B-545 OR 539



52013
 PART NUMBER

THIS DRAWING IS A CONTROLLED DOCUMENT.		DR C.C. THOMAS 6-24-09	Tyco Electronics Corporation Harrisburg, PA 17105-3608	
DIMENSIONS: INCHES		CHK J. WEAVER 6-25-09	NAME J. WEAVER	
TOLERANCES UNLESS OTHERWISE SPECIFIED:		APPC J. WEAVER 6-25-09	PRODUCT SPEC	
Ø PLC ± .005	PLC ± .005	APPLICATION SPEC		SIZE CASE CODE DRAWING NO
PLC ± .005	PLC ± .005	WEIGHT		A2 00779 C-52013
ANGLES ± .5	FINISH	CUSTOMER DRAWING		RESTRICTED TO
			SCALE 4:1	SHEET 1 of 1 REV F

52013

A