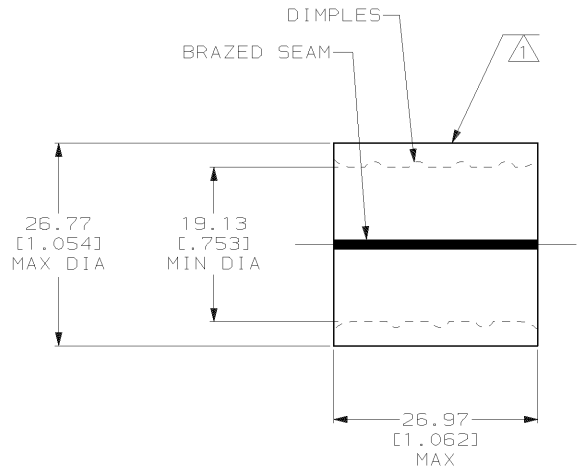


THIS DRAWING IS UNPUBLISHED. RELEASED FOR PUBLICATION, 19 .
 © COPYRIGHT 19 BY AMP INCORPORATED. ALL INTERNATIONAL RIGHTS RESERVED.

LOC	DIST	P	F	ZONE	LTR	DESCRIPTION	DATE	APPD
G	14					REV PER 063A-0435-02	30SEP02	MS

METRIC
 DIMENSIONS LISTED IN mm [INCHES]



AMP WIRE RANGE	UL E13288 Listed
250 MCM STRANDED	250 MCM STRANDED
SP LR7189 Certified	MILITARY P/N AND CLASS
250 MCM STRANDED	NOT APPLICABLE

- ⚠ STAMP AMP W* 250-300 MCM LOCATE APPROX AS SHOWN
- 2 MATERIAL THK: 3.20^{+0.10} [1.26^{+0.004}]
- 3 STAMP FOR MANUFACTURING LOCATION OR CODE PERMISSIBLE.

AMP INCORPORATED CUSTOMER SERVICE SYSTEMS		MAX RECOMMENDED OPERATING TEMPERATURE: 170°C MAX	322275 PART NO	
FOR ADDITIONAL PRODUCT INFORMATION OR COPIES OF DRAWINGS AND TECHNICAL DOCUMENTS	PRODUCT INFORMATION CENTER 1-800-522-6752	VOLTAGE RATING: NOT APPLICABLE	DO NOT SCALE PRINT. UNLESS SPECIFIED DIMENSIONS IN INCHES TOLERANCES ON: 2. PLC DEC ± 0.20(.008) 3. PLC DEC ± - ANGLES ± -	DR 5/6/93 DK SCHLIM CHK 5/14/93 AJ KAUFMAN APPO 5/14/93 RE ROSEB APPO 5/14/93 CR RHODS
FOR APPLICATION TOOLING INFORMATION	TOOLING ASSISTANCE CENTER 1-800-722-1111	CIRCULAR MIL AREA: 117.1-152.0mm ² [231-300] MCM STRANDED	MATERIAL COPPER PER ASTM B-152 ANNEALED	AMP Incorporated Harrisburg, PA 17105-3608
FOR ORDER ENTRY	1-800-526-5142	THIS DRAWING IS A CONTROLLED DOCUMENT FOR AMP INCORPORATED. IT IS SUBJECT TO CHANGE AND THE CONTROLLING ENGINEERING ORGANIZATION SHOULD BE CONTACTED FOR THE LATEST REVISION.	FINISH TIN PLATE 0.00254(.000100) MIN THK PER MIL-T-10727	NAME SPLICE, PARALLEL, SOLISTRAND, WIRE SIZE: 250-300 MCM
AMP 1470-15 REV 3-92 06 MAY 1993 07:45:57 AMP26463 <US128A>DEPT1123>DWG1123>U.SOL1STRAND>U.PARALLEL-SPLICE			APPLICATION SPEC WEIGHT -	SIZE B CAGE CODE 00779 DRAWING NO C=322275 SCALE 2:1 SHEET 1 OF 1

CUSTOMER DRAWING