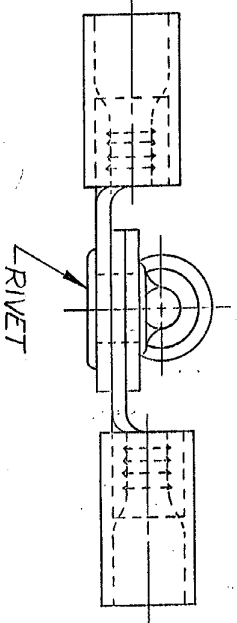
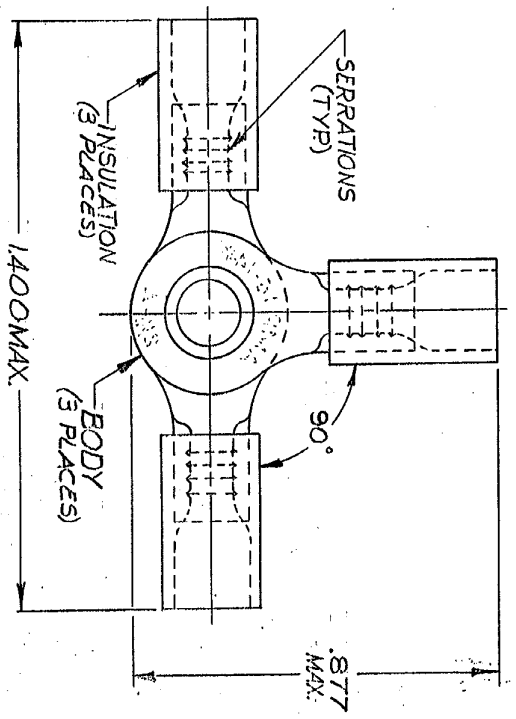


DRAWING MADE IN AMERICAN PROJECTION  
 © 1977 BY AMP INCORPORATED. ALL RIGHTS RESERVED. AMP PRODUCTS COVERED BY PATENTS AND/OR PATENTS PENDING.



REVISIONS				
ZONE	LTR	DESCRIPTION	DATE	APPROVED
B		REDRAWN & REACTIVATED PER R 6923	10/16-72	<i>[Signature]</i>
C		REVISED PER G-1230	11-16-72	<i>[Signature]</i>
D		REVISED F-621	12-23-73	<i>[Signature]</i>
E		REVISED / 0720-0036-93	3-2-93	<i>[Signature]</i>

NOTE:  
 1. STAMPING MAY BE ON TOP OR BOTTOM.  
 TONGUE MATERIAL THK = .031 ±.002  
 FOR .105-.145 WIRE INS. DIA.

50	LOOSE PC, BOX	8-34073-2	
1	WIRE TERMINAL	34073	
QTY. DESCRIPTION		PART NO.	
UNLESS OTHERWISE SPECIFIED DIMENSIONS ARE IN INCHES. DIMENSIONS ON ANGLES ±.5°		CONTRACT NO. H	
MATERIAL		DR. Hoyt R. L. 10-3-72	
SEE TABLE		APPR. <i>[Signature]</i> 11-3-72	
		REL. Hoyt R. L. 10-6-72	
		DSGN APPO	
		OTHER APPO	
MATERIAL & FINISH		NAME	
BODY: COPPER (99-C-516)		AMP	
INSULATION: PVC		AMP INCORPORATED	
RIVET: BRASS (90-B-626)		HARRISBURG, PENNSYLVANIA	
TIN PL. (MIL-T-10727)		WIRE TERMINAL	
ANNEALED		PLASTI-GRIP-TEE CONNECTOR	
COLOR: BLUE		WIRE SIZE: 16-14	
SIZE	CODE IDENT NO.	NUMBER	
B	00779	34073	
SCALE	4:1	SHEET	1 OF 1