

4

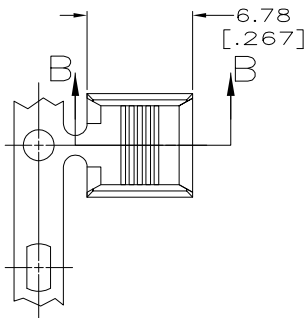
3

2

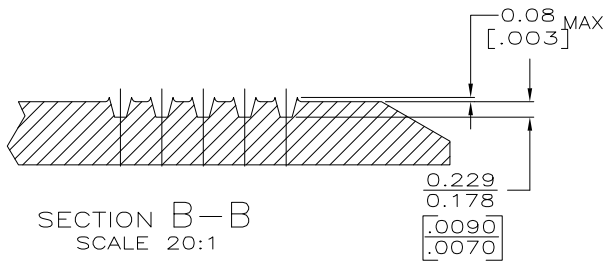
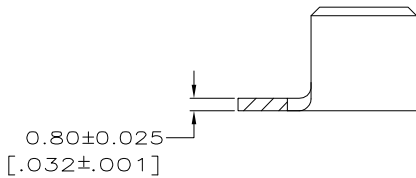
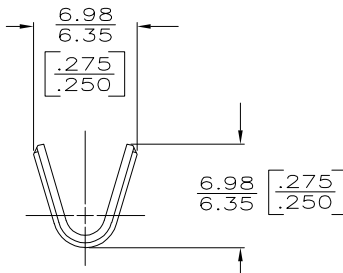
1

THIS DRAWING IS UNPUBLISHED. RELEASED FOR PUBLICATION
 © COPYRIGHT - BY TYCO ELECTRONICS CORPORATION. ALL RIGHTS RESERVED.

LOC		DIST		REVISIONS			
P	LTR	DESCRIPTION	DATE	DWN	APVD		
AF	50	C1	ECR-06-023927(REDRAWN IN AUTOCAD)	14NOV06	HMR	GP	



1 CONTINUOUS STRIP ON REEL.
 2 CRIMP WIDTH: .180 F TYPE (AMPLIVAR THRU)
 CRIMP HEIGHT (± 0.002) = (TOTAL CMA + 28,700) / 317,400
 GENERAL APPLICATION GUIDELINES MUST BE FOLLOWED AS SPECIFIED IN CATALOG #82221
 FOR APPLICATION INFORMATION CALL: 1-800-722-1111
 FOR PRODUCT INFORMATION CALL: 1-800-522-6752



2	10,000-16,000 CMA	63561-1
WIRE RANGE		PART NUMBER

THIS DRAWING IS A CONTROLLED DOCUMENT.		DWN 05/JUN/2002 MICHAEL S. FEHER	Tyco Electronics Corporation Harrisburg, PA 17105-3608	
DIMENSIONS: mm [INCHES]		CHK 05/JUN/2002 GARY D. PORTA	NAME GARY D. PORTA	
TOLERANCES UNLESS OTHERWISE SPECIFIED:		APVD 05/JUN/2002 GARY D. PORTA	PRODUCT SPEC	
0 PLC	± -	APPLICATION SPEC		
1 PLC	± -	WEIGHT		
2 PLC	± 0.25 [010]	SIZE CAGE CODE DRAWING NO		
3 PLC	± -	RESTRICTED TO		
4 PLC	± -	A3 00779 C-63561		
ANGLES	± -	SCALE 4:1 SHEET 1 OF 1 REV C1		
MATERIAL	FINISH	CUSTOMER DRAWING		
H02 BRASS	0.002032[.000080] MIN TIN PLATE			