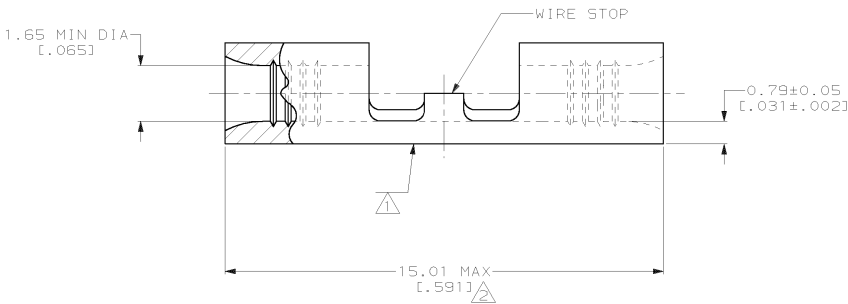
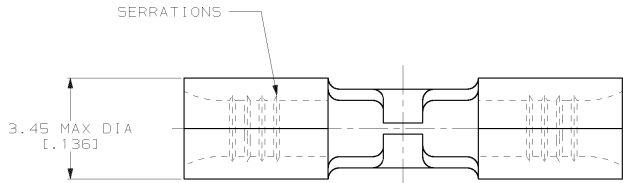


THIS DRAWING IS UNPUBLISHED. RELEASED FOR PUBLICATION 19  
 © COPYRIGHT 19 BY AMP INCORPORATED. ALL INTERNATIONAL RIGHTS RESERVED.

LOC	DIST	ZONE	LTR	DESCRIPTION	DATE	APPO
G	14	P	F	G REV PER 063A-0363-00	15JUN00	JR/MS

**METRIC**  
 DIMENSIONS LISTED IN mm [ INCHES ]



<b>AMP</b> WIRE RANGE	<b>UL</b> E13288 Listed
22-16 AWG STRAINED	22-16 AWG STRAINED
<b>LR7189</b> Certified	<b>MILITARY P/N</b> AND CLASS
NOT CERTIFIED	NOT APPLICABLE

- ⚠ STAMP AMP 22-18\* APPROX AS SHOWN  
22-16 SPLICES ARE STAMPED 22-18 IN  
ACCORDANCE WITH MILITARY SPEC MIL-T-7928  
COMMERCIAL WIRE RANGE IS 22-16
- ⚠ MAXIMUM LENGTH DOES NOT INCLUDE  
MANUFACTURING TABS
- ⚠ TIN PL 0.00254 [0.00100] MIN THK PER ASTM B 545

-⚠	3,500	ON TAPE, REEL	2-32463-0
-⚠	-	LOOSE PIECE	32463
FINISH	QTY	PACKAGE TYPE	AMP PART NUMBER
DR 2-25-93 TA BRINKMAN		<b>AMP</b> AMP Incorporated Harrisburg, PA 17105-3608 NAME <b>SPLICE, BUTT,          STRAP, BUDGET</b>	
CHK 2-25-93 DA PATTERSON			
APPD 2-25-93 DE MILLER			
APPD 2-25-93 JL MECKLEY			
PRODUCT SPEC			
FINISH		APPLICATION SPEC	SIZE
SEE TABLE		-	CAGE CODE
			00779
		WEIGHT	DRAWING NO
		-	C-32463
		SCALE	SHEET
		10:1	1 OF 1

<b>AMP INCORPORATED CUSTOMER SERVICE SYSTEMS</b>		MAX RECOMMENDED OPERATING TEMPERATURE: 170°C MAX
FOR ADDITIONAL PRODUCT INFORMATION OR COPIES OF DRAWINGS AND TECHNICAL DOCUMENTS	PRODUCT INFORMATION CENTER 1-800-522-6752	VOLTAGE RATING: NOT APPLICABLE
FOR APPLICATION TOOLING INFORMATION	TOOLING ASSISTANCE CENTER 1-800-722-1111	WIRE CROSS SECTIONAL AREA RANGE: 0.26-1.65mm <sup>2</sup> [509-3,260] CIR MILS STRAINED
FOR ORDER ENTRY	1-800-526-5142	THIS DRAWING IS A CONTROLLED DOCUMENT FOR AMP INCORPORATED. IT IS SUBJECT TO CHANGE AND THE CONTROLLING ENGINEERING ORGANIZATION SHOULD BE CONTACTED FOR THE LATEST REVISION.

AMP 1471-B REV 3-92  
 07-NOV-96 09:44:54 amp26463 /ws/dept1123/dwgl123/u.splice

CUSTOMER DRAWING