

4

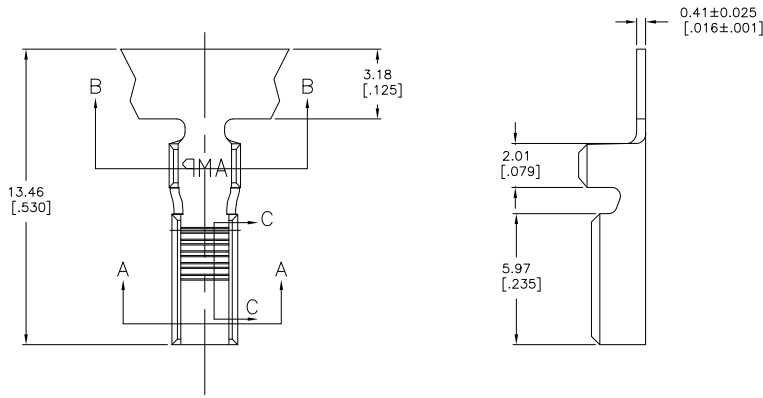
3

2

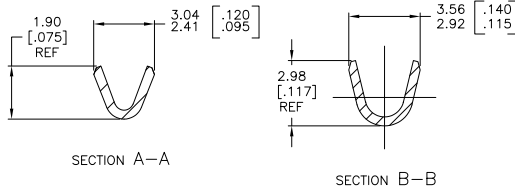
1

THIS DRAWING IS UNPUBLISHED. RELEASED FOR PUBLICATION  
 © COPYRIGHT BY TYCO ELECTRONICS CORPORATION. ALL RIGHTS RESERVED.

LOC	DIST	REVISIONS			
F	LNK	DESCRIPTION	DATE	BY	APPD
B2		REVISED PER ECR-08-019106	11AUG08	HMR	DL



- 1 PRODUCT PROVIDED IN STRIP FORM ON REELS; BREAKS MAY BE PRESENT
- 2 WIRE RANGE: 600 - 1400 CMA
- 3 REF CRIMP INFORMATION :  
 WIRE CRIMP - .062, TYPE O  
 INSULATION CRIMP - .100, TYPE O



SECTION B-B

1742451-1  
 PART NO

THIS DRAWING IS A CONTROLLED DOCUMENT.		DRN RAGHAVENDRA 01AUG2008	Tyco Electronics Corporation Harrisburg, PA 17105-3608	
DIMENSIONS: mm [INCHES]		CHK C. PORTA 01AUG2008	NAME C. PORTA	
TOLERANCES UNLESS OTHERWISE SPECIFIED:		APPRO 01AUG2008	PRODUCT SPEC	
0 PLC	±	APPLICATION SPEC		
1 PLC	±	SIZE		
2 PLC	±	CAGE CODE		
3 PLC	± 0.25(010)	DRAWING NO		
4 PLC	±	RESTRICTED TO		
5 PLC	±	WEIGHT		
6 PLC	±	CUSTOMER DRAWING		
ANGLES	±	SCALE 8:1		
FINISH	-	SHEET 1 of 1		
MATERIAL BRASS		REV B2		

AMP 1471-9 REV 31MAR2000

1742451

A