

4

3

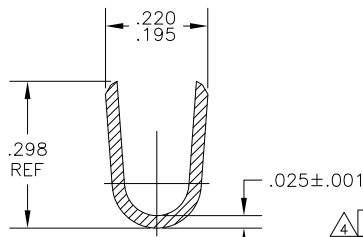
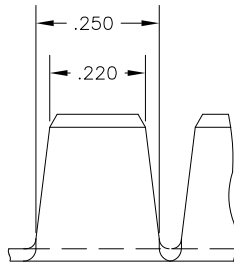
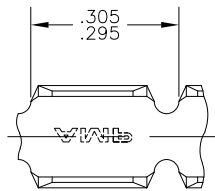
2

1

THIS DRAWING IS UNPUBLISHED. RELEASED FOR PUBLICATION
 © COPYRIGHT - BY TYCO ELECTRONICS CORPORATION. ALL RIGHTS RESERVED.

LOC	DIST	REVISIONS			
P	LTR	DESCRIPTION	DATE	DWN	APVD
	P1	ECR-07-001426(REDRAWN IN AUTOCAD)	13DEC06	HMR	GP
	P2	REVISED PER ECO-09-021826	07SEP09	KK	AEG

- 1 CONTINUOUS STRIP ON REELS.
- 2 WIRE RANGE: 12,000 TO 18,000 CMA
- △3 FOREIGN PRODUCTION ONLY.
- △4 OBSOLETE PARTS: OBSOLETE CIS STREAMLINING PER D.RENAUD/D.SINISI



△4	OBSOLETE	NONE	TEMPER A ST. STEEL	60997-5
	OBSOLETE	.00080 MIN TIN	TEMPER 3 C.R. STEEL	60997-4
△4	OBSOLETE	.000150 MIN NICKEL	TEMPER 3 C.R. STEEL	60997-3
△3	OBSOLETE	.00080 MIN TIN	O82 BRASS	60997-2
		NONE	O82 BRASS	60997-1
		FINISH	MATERIAL	PART NO

THIS DRAWING IS A CONTROLLED DOCUMENT.		DWN	13DEC06	Tyco Electronics Corporation	
		CHK	04JAN07	Harrisburg, Pa 17105-3608	
DIMENSIONS:		G.D.PORTA		NAME	
INCHES		G.D.PORTA		NAME	
		APVD		PRODUCT SPEC	
		G.D.PORTA		APPLICATION SPEC	
				RESTRICTED TO	
MATERIAL		WEIGHT		SIZE	
SEE TABLE		-		A3 00779 C-60997	
FINISH		SEE TABLE		DRAWING NO	
				CAGE CODE	
				DRAWING NO	
				RESTRICTED TO	
				-	
				SCALE	
				5:1	
				SHEET	
				1 OF 1	
				REV	
				P2	