

4

3

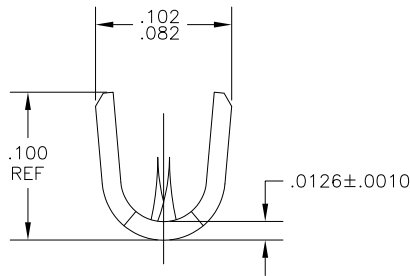
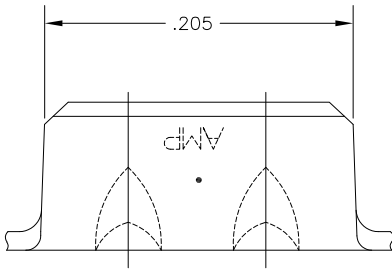
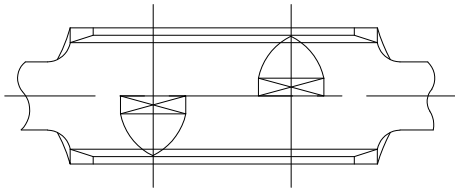
2

1

THIS DRAWING IS UNPUBLISHED. RELEASED FOR PUBLICATION
 © COPYRIGHT - BY TYCO ELECTRONICS CORPORATION. ALL RIGHTS RESERVED.

LOC	DIST	REVISIONS				
P	LTR	DESCRIPTION	DATE	DWN	APVD	
AF	50	J1	ECR-07-019054(REDRAWN IN AUTOCAD)	05JUL07	HMR	GP

- 1 CONTINUOUS STRIP ON REELS
- 2 WIRE RANGE: 22 AWG
- 3 INSULATION RANGE: .050 - .065 DIA.



	NICKEL	485064-4
OBSOLETE	TIN	485064-3
	GOLD OVER NICKEL	485064-2
	NONE	485064-1
	FINISH	PART NO

THIS DRAWING IS A CONTROLLED DOCUMENT.		DWN	RAGHAVENDRA	05JUL07	Tyco Electronics		Tyco Electronics Corporation Harrisburg, PA 17105-3608															
DIMENSIONS: INCHES		CHK	G.D.PORTA	05JUL07	NAME		SPLICE INSULATION PIERCING															
<table border="1"> <tr> <th colspan="2">TOLERANCES UNLESS OTHERWISE SPECIFIED:</th> </tr> <tr> <td>0 PLC</td> <td>± -</td> </tr> <tr> <td>1 PLC</td> <td>± -</td> </tr> <tr> <td>2 PLC</td> <td>± -</td> </tr> <tr> <td>3 PLC</td> <td>± .010</td> </tr> <tr> <td>4 PLC</td> <td>± -</td> </tr> <tr> <td>ANGLES</td> <td>± -</td> </tr> </table>		TOLERANCES UNLESS OTHERWISE SPECIFIED:		0 PLC	± -	1 PLC	± -	2 PLC	± -	3 PLC	± .010	4 PLC	± -	ANGLES	± -	APVD	G.D.PORTA	05JUL07	PRODUCT SPEC		RESTRICTED TO	
TOLERANCES UNLESS OTHERWISE SPECIFIED:																						
0 PLC	± -																					
1 PLC	± -																					
2 PLC	± -																					
3 PLC	± .010																					
4 PLC	± -																					
ANGLES	± -																					
MATERIAL BRASS		APPLICATION SPEC		SIZE		CAGE CODE	DRAWING NO	RESTRICTED TO														
FINISH SEE TABLE		WEIGHT		A3	00779	C=485064																
CUSTOMER DRAWING				SCALE	15:1	SHEET	1 of 1	REV J1														

AMP 1470-19 REV 31MAR2000