

4

3

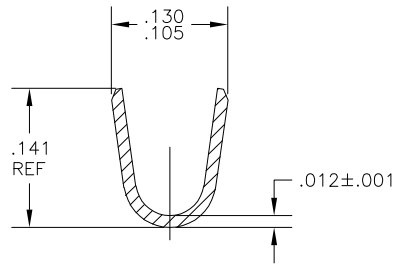
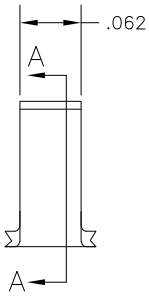
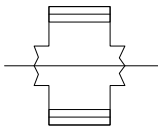
2

1

THIS DRAWING IS UNPUBLISHED. RELEASED FOR PUBLICATION
 © COPYRIGHT - BY TYCO ELECTRONICS CORPORATION. ALL RIGHTS RESERVED.

LOC	DIST	REVISIONS				
P	LTR	DESCRIPTION	DATE	DWN	APVD	
AF	50	H1	ECR-07-006113(REDRAWN IN AUTOCAD)	18JAN07	HMR	GP

- 1 CONTINUOUS STRIP ON REELS.
- 2 WIRE RANGE: 2200 TO 4500 CMA



SECTION A-A

41215
PART NO

THIS DRAWING IS A CONTROLLED DOCUMENT.		DWN RAGHAVENDRA 18JAN07	Tyco Electronics Corporation Harrisburg, Pa 17105-3608																			
DIMENSIONS: INCHES		CHK G.D.PORTA 18JAN07	APVD G.D.PORTA 18JAN07																			
TOLERANCES UNLESS OTHERWISE SPECIFIED:		NAME SPLICE																				
<table border="1"> <tr><td>0</td><td>PLC</td><td>± -</td></tr> <tr><td>1</td><td>PLC</td><td>± -</td></tr> <tr><td>2</td><td>PLC</td><td>± -</td></tr> <tr><td>3</td><td>PLC</td><td>± .D10</td></tr> <tr><td>4</td><td>PLC</td><td>± -</td></tr> <tr><td colspan="2">ANGLES</td><td>± -</td></tr> </table>		0	PLC	± -	1	PLC	± -	2	PLC	± -	3	PLC	± .D10	4	PLC	± -	ANGLES		± -	PRODUCT SPEC APPLICATION SPEC		
0	PLC	± -																				
1	PLC	± -																				
2	PLC	± -																				
3	PLC	± .D10																				
4	PLC	± -																				
ANGLES		± -																				
MATERIAL STEEL	FINISH .000100 MIN NICKEL	WEIGHT -	SIZE A3	CAGE CODE 00779																		
CUSTOMER DRAWING		DRAWING NO 41215	RESTRICTED TO -																			
		SCALE 10:1	SHEET 1	OF 1																		
		REV H1																				