

4

3

2

1

THIS DRAWING IS UNPUBLISHED.

RELEASED FOR PUBLICATION

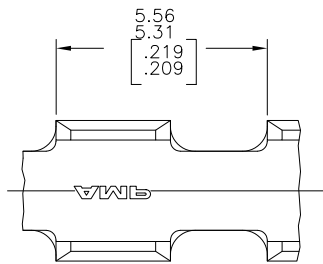
COPYRIGHT - By -

ALL RIGHTS RESERVED.

LOC
AF 50

REVISIONS

| P | LTR | DESCRIPTION | DATE | DWN | APVD |
|----|-----|---------------------------|---------|-----|------|
| G1 | | REVISED PER ECR-11-006644 | 06APR11 | HMR | GJ |

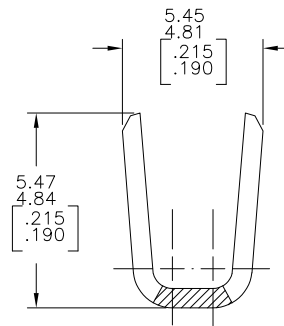
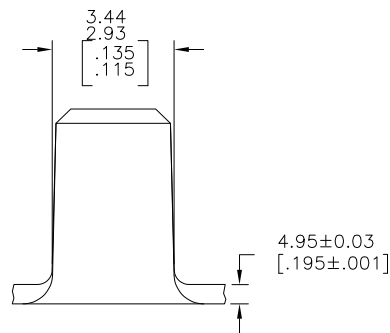


- 1 PRODUCT PROVIDED IN CONTINUOUS (BREAK FREE) STRIP FORM ON REELS.



WIRE RANGE FOR NEW APPLICATIONS: 3.04-4.05mm²[6000-8000 CMA]
(WIRE RANGE APPROVED FOR APPLICATIONS IMPLEMENTED PRIOR TO 2005: 3200-6700 CMA).

- 3 CRIMP WIDTH: 3.94[.155] F TYPE. CRIMP HEIGHT IN INCHES (+/- .002)=(TOTAL CMA OF WIRES+14750)/250000.



| | | | |
|---------------|--------|----------|----------|
| 2 | TIN | BRASS | 485020-2 |
| | TIN | STEEL | 485020-1 |
| WIRE SIZE CMA | FINISH | MATERIAL | PART NO. |

| | | | | |
|--|--|---------------------------------|--------------------|----------------------|
| THIS DRAWING IS A CONTROLLED DOCUMENT. | | DWN M.S. FEHER 14NOV2005 | TE Connectivity | |
| DIMENSIONS: mm [INCHES] | | CHK G.D. PORTA 14NOV2005 | NAME SPLICE | |
| TOLERANCES UNLESS OTHERWISE SPECIFIED: | | APVD G.D. PORTA 14NOV2005 | RESTRICTED TO | |
| 0 PLC ± - | | PRODUCT SPEC | SIZE A3 | |
| 1 PLC ± - | | APPLICATION SPEC | CAGE CODE 00779 | DRAWING NO 485020 |
| 2 PLC ± 0.25[.010] | | WEIGHT 114-2088 | SCALE 10:1 | |
| 3 PLC ± - | | MATERIAL SEE TABLE | SHEET 1 OF 1 | |
| 4 PLC ± - | | FINISH SEE TABLE | REV G1 | |
| ANGLES ± 1° | | CUSTOMER DRAWING | | |

1470-19 (3/11)