

4

3

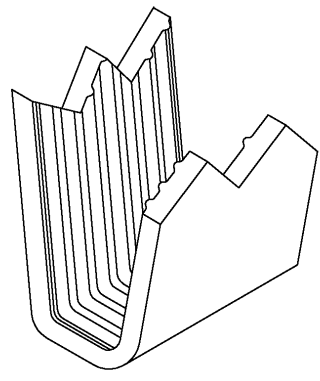
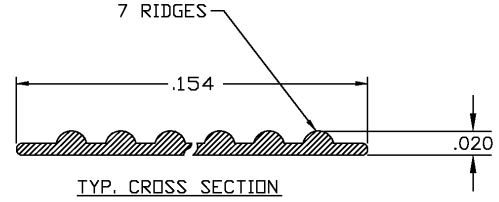
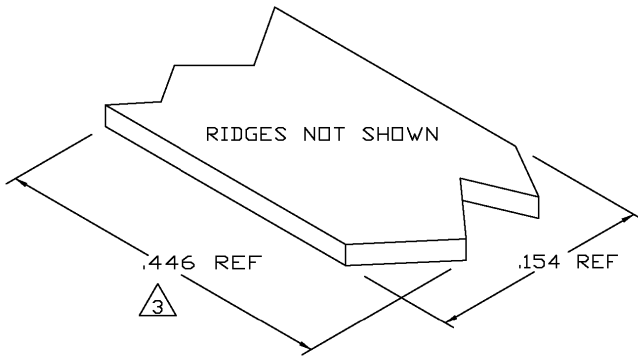
2

1

THIS DRAWING IS UNPUBLISHED. RELEASED FOR PUBLICATION
 © COPYRIGHT - BY TYCO ELECTRONICS CORPORATION. ALL RIGHTS RESERVED.

LDC		DIST		REVISIONS			
P	LTR	DESCRIPTION	DATE	DWN	APVD		
0		TRANSFERRED TO TYCO FORMAT	16SEP02	MF	EH		

- CRIMPBAND MATERIAL PROVIDED IN CONTINUOUS STRIP.
 - REFERENCE DESCRIPTIVE PART NUMBER L125D20TCRS.
- △ 3 BLANK LENGTH DETERMINED BY 125 TOOLSET.



PARTIAL FORMED VIEW (REF)
 FORMED BY APPLICATION TOOLING

1601733-1
 PART NUMBER

THIS DRAWING IS A CONTROLLED DOCUMENT.		DWN 16SEP2002 MICHAEL S. FEHER		Tyco Electronics Corporation Harrisburg, PA 17105-3608	
DIMENSIONS: INCHES		CHK 16SEP2002 EDWARD HOWARD		NAME	
TOLERANCES UNLESS OTHERWISE SPECIFIED:		APVD 16SEP2002 EDWARD HOWARD		CRIMPBAND, RTM	
0 PLC ± -		PRODUCT SPEC		RESTRICTED TO	
1 PLC ± -		APPLICATION SPEC		-	
2 PLC ± -		WEIGHT		-	
3 PLC ± .005		SIZE		CAGE CODE	
4 PLC ± -		A3		00779	
ANGLES ± -		DRAWING NO		1601733	
MATERIAL		FINISH		SCALE	
UNS G10100 COLD ROLL STEEL		TIN		1:1	
		CUSTOMER DRAWING		SHEET 1 OF 1 REV 0	

AMP 1470-19 REV 31MAR2000

H:\