

4

3

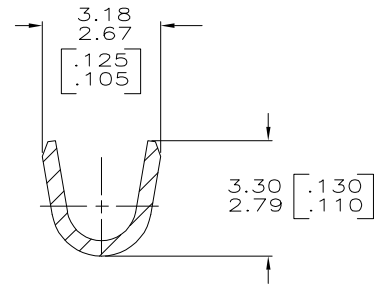
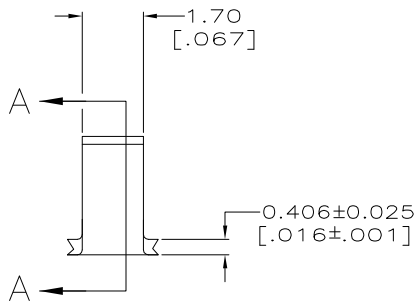
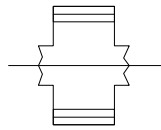
2

1

THIS DRAWING IS UNPUBLISHED. RELEASED FOR PUBLICATION  
 © COPYRIGHT - BY TYCO ELECTRONICS CORPORATION. ALL RIGHTS RESERVED.

LOC	DIST	REVISIONS			
P	LTR	DESCRIPTION	DATE	DWN	APVD
AF	50	M2	REVISED PER ECR-07-004194	27FEB07	HMR GP

- 1 CONTINUOUS STRIP ON REEL.
- 2 WIRE RANGE IS 800-2600 CMA  
 CRIMP WIDTH: .090, F TYPE  
 CRIMP HEIGHT  $\pm 0.002 = (\text{TOTAL CMA} + 6470) / 142,800$   
 FOR APPLICATOR INFORMATION CALL: 1-800-722-1111  
 FOR PRODUCT INFORMATION CALL: 1-800-522-6752



SECTION A-A

0.0025[.000100] MIN NICKEL	STEEL (UNS 1008-1010)	41459-3
0.002032 [.000080] MIN TIN	082 BRASS	41459-2
-	COPPER NICKEL C725	41459-1
-	082 BRASS	41459
FINISH	MATERIAL	PART NO

THIS DRAWING IS A CONTROLLED DOCUMENT.		DWN PHILLIP M. FORTNEY 8/9/94	Tyco Electronics Corporation Harrisburg, Pa 17105-3608	
DIMENSIONS: INCHES		CHK JR RUTH 8/9/94	NAME	
TOLERANCES UNLESS OTHERWISE SPECIFIED:		APVD R KUZO 8/9/94	PRODUCT SPEC	
0 PLC ± -		APPLICATION SPEC		
1 PLC ± -		WEIGHT		
2 PLC ± 0.25 [010]		SIZE CAGE CODE DRAWING NO		
3 PLC ± -		RESTRICTED TO		
4 PLC ± -		A3 00779 C-41459		
ANGLES ± -		CUSTOMER DRAWING		
MATERIAL SEE TABLE	FINISH SEE TABLE	SCALE 10:1		SHEET 1 OF 1 REV M2