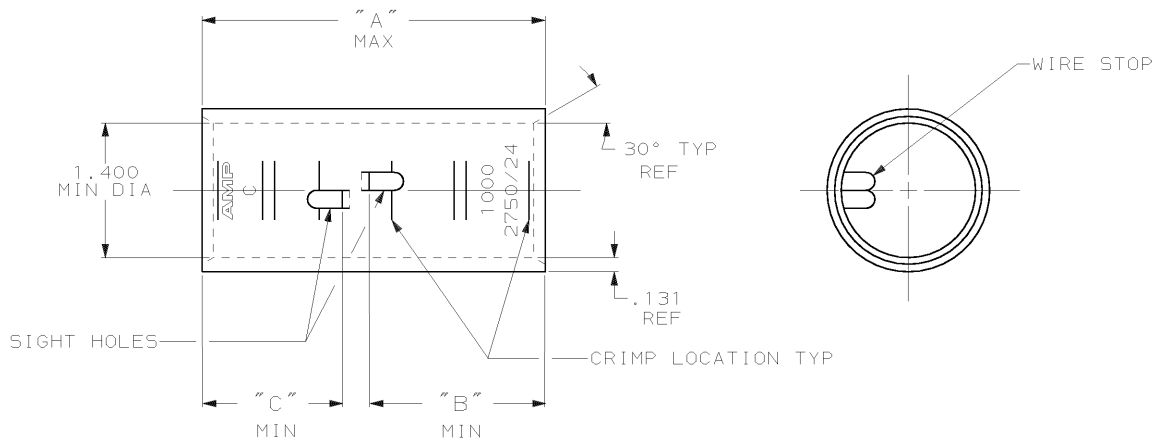


DRAWING MADE IN THIRD ANGLE PROJECTION

THIS DRAWING IS UNPUBLISHED. RELEASED FOR PUBLICATION, 19
 © COPYRIGHT 19 BY AMP INCORPORATED. ALL INTERNATIONAL RIGHTS RESERVED.

LOC	DIST	REVISIONS				DATE	APPD
P	F	ZONE	LTR	DESCRIPTION			
G	86			R	REV PER 063A-0637-01	030CT02	JR/MS



- 1 TIN PL .000150 MIN THK MIL-T 10727
- 2 WIRE RANGE: 950 - 1125 MCM
- 3 PART NO: 324471; .665 LB.
PART NO: 1-324471-0; .665 LB.
PART NO: 2-324471-1; .743 LB.
- 4 PREPRODUCTION - FASR REQ.

1.46	1.83	3.64	△	COPPER	△ 2-324471-1
1.46	1.46	3.27	CLEANED	ASTM-B-75	1-324471-0
"c"	"b"	"a"	△	ANNEALED	324471
			FINISH	MATERIAL	PART NO
DO NOT SCALE PRINT. UNLESS SPECIFIED DIMENSIONS IN INCHES TOLERANCES ON:			DR 4/24/89	AMP INCORPORATED Harrisburg, Pa. 17105	
2. PLC DEC ± -			CHK 4/24/89		
3. PLC DEC ± -			MS FEHER	NAME SPLICE, BUTT, AMPPOWER WIRE SIZE: 1000 MCM	
ANGLES ± -			APPD 11/8/89		
MATERIAL			APPD 11/8/89	SIZE B 00779	
SEE TABLE			WJ WICKROTH		
FINISH			TL SHUTTER	DRAWING NO 324471	
SEE TABLE			PRODUCT SPEC		
			APPLICATION SPEC	SCALE 1:1 SHEET 1 OF 1	
			WEIGHT		

AMP 1470-15 REV 3-87
 02-DEC-99 13:34:35 amp13469 /home/amp13469/ednod

CUSTOMER DRAWING