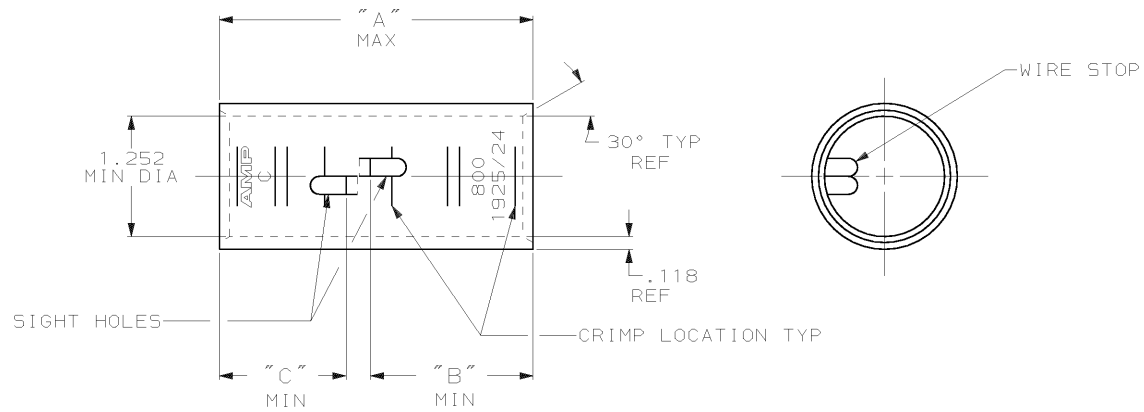


DRAWING MADE IN THIRD ANGLE PROJECTION

THIS DRAWING IS UNPUBLISHED. RELEASED FOR PUBLICATION, 19
 © COPYRIGHT 19 BY AMP INCORPORATED. ALL INTERNATIONAL RIGHTS RESERVED.

LOC	DIST	REVISIONS						
G	86	P	F	ZONE	LTR	DESCRIPTION	DATE	APPD
					M	REV PER 063A-0637-01	030CT02	JR/MS



- ① TIN PL .000150 MIN THK MIL-T-10727
- ② PART NO: 324469; .486 LB.
 PART NO: 1-324469-0; .486 LB.
 PART NO: 2-324469-2; .548 LB.

1.32	1.69	3.31	△	750-850	COPPER	2-324469-2
1.32	1.32	2.96	CLEANED	MCM	ASTM-B-75	1-324469-0
"c"	"b"	"a"	△	WIRE RANGE	ANNEALED	324469
DO NOT SCALE PRINT. UNLESS SPECIFIED DIMENSIONS IN INCHES TOLERANCES ON:			DR 4/24/89	AMP INCORPORATED Harrisburg, Pa. 17105		
1. PLC DEC ± -			CHK 4/24/89	NAME SPLICE, BUTT, AMPPOWER WIRE SIZE: 800 MCM		
2. ANGLES ± -			MS FEHER			
MATERIAL			APPD 11/8/89	SIZE		
SEE TABLE			WJ WICKROTH	FSCM NO		
FINISH			APPD 11/8/89	DRAWING NO		
SEE TABLE			TL SHUTTER	B 00779 324469		
APPLICATION SPEC			PRODUCT SPEC	SCALE 1:1		
WEIGHT			APPLICATION SPEC	SHEET 1 OF 1		
			WEIGHT			

AMP 1470-15 REV 3-87
 19 JUL 1989 14:02:34 526463 40512BA:REP1125:DWG1125:U:AMPOWER:U:SPLICE

CUSTOMER DRAWING