

4

3

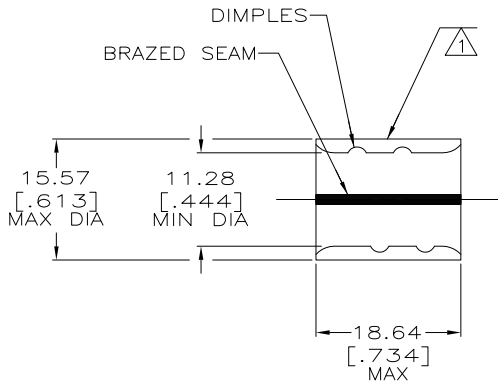
2

1

THIS DRAWING IS UNPUBLISHED. RELEASED FOR PUBLICATION
 © COPYRIGHT - BY TYCO ELECTRONICS CORPORATION. ALL RIGHTS RESERVED.

LOC	DIST	REVISIONS			
P	LTR	DESCRIPTION	DATE	DWN	APVD
G	14	H	REV PER ECR 08-027230	31OCT08	JR RL

AMP WIRE RANGE	Listed FILE E13288	LR7189 Certified
1/0 AWG SOLID OR STRANDED	1/0 AWG SOLID OR STRANDED	1/0 AWG SOLID OR STRANDED



- ① STAMP AMP 1/0W* 100 LOCATE APPROX AS SHOWN
- 2 MATERIAL THK: 1.78 ±0.08 [.070±.003]
- ③ TIN PL 0.00254 [.000100] MIN THK PER ASTM B545.
- ④ CLEANED, UNPLATED
- ⑤ P/N 1-36946-1 IS NOT UL OR CSA LISTED.
- 6 STAMP FOR MANUFACTURING LOCATION OR CODE PERMISSIBLE.
- ⑦ COPPER PER ASTM B-152, ANNEALED
- ⑧ PREPRODUCTION - FASR REQ.
- ⑨ 0.00254 [.000100] MIN TIN/LEAD (60/40) PLATE PER SAE-AMS-P-81728
- ⑩ NOT UL OR CSA LISTED

FINISH	QTY	PACKAGE TYPE	PART NO
⑨	-	LOOSE PIECE	⑩⑧ 36946-2
③	10	LOOSE PIECE, BOX	8-36946-5
③	400	LOOSE PIECE, BOX	8-36946-4
④	-	LOOSE PIECE	⑤⑧ 1-36946-1
③	-	LOOSE PIECE	36946

AMP INCORPORATED CUSTOMER SERVICE SYSTEMS		MAX RECOMMENDED OPERATING TEMPERATURE: 170° C	THIS DRAWING IS A CONTROLLED DOCUMENT.		DWN DK SCHRUM 5/21/93 CHK RD HEIM 5/21/93 APVD CR RHOADS 5/21/93	Tyco Electronics Corporation Harrisburg, PA 17105-3608			
FOR ADDITIONAL PRODUCT INFORMATION OR COPIES OF DRAWINGS AND TECHNICAL DOCUMENTS PRODUCT INFORMATION CENTER 1-800-522-6752	FOR APPLICATION TOOLING ASSISTANCE CENTER TOOLING INFORMATION 1-800-722-1111	VOLTAGE RATING: N/A	DIMENSIONS: MM [INCHES]	TOLERANCES UNLESS OTHERWISE SPECIFIED: 0 PLC ± - 1 PLC ± - 2 PLC ± 0.20[.008] 3 PLC ± - 4 PLC ± - ANGLES ± -	NAME SPLICE, PARALLEL, SOLISTRAND	SIZE A3	CAGE CODE 00779	DRAWING NO C-36946	RESTRICTED TO -
FOR ORDER ENTRY 1-800-526-5142	THIS DRAWING IS A CONTROLLED DOCUMENT FOR AMP INCORPORATED. IT IS SUBJECT TO CHANGE AND THE CONTROLLING ENGINEERING ORGANIZATION SHOULD BE CONTACTED FOR THE LATEST REVISION.		MATERIAL 	FINISH SEE TABLE	WEIGHT -	SCALE 2:1	SHEET 1 of 1	REV H	CUSTOMER DRAWING

AMP 1470-19 REV 31MAR2000