





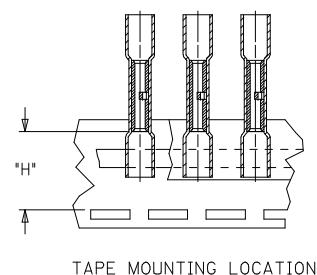
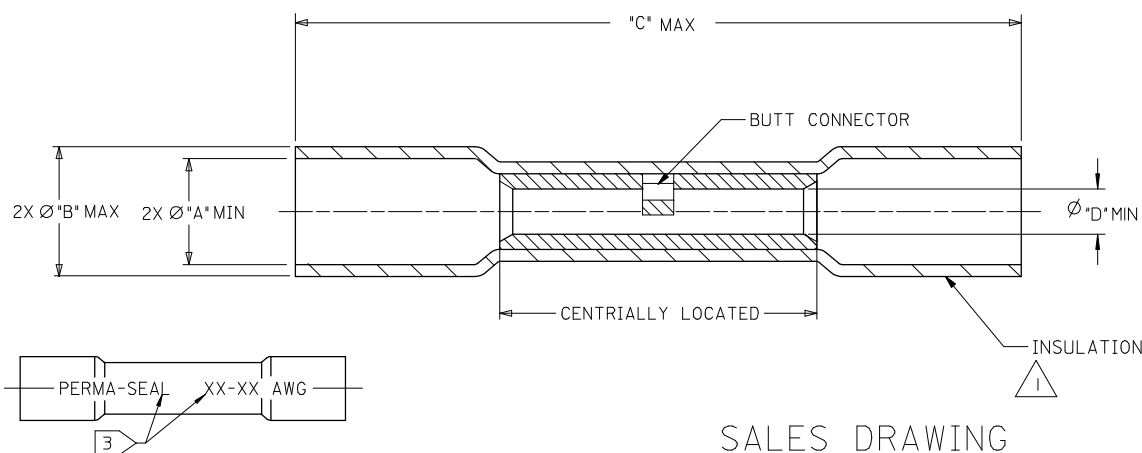




10		9		8		7		6		5		4		3		2		19164	
F	MATERIAL NUMBER	ENGINEERING NUMBER	MYLAR TAPE MATERIAL NUMBER	MYLAR TAPE ENGINEERING NUMBER	PERMA-SEAL COLOR	WIRE AWG 	"A"  MIN	"B" Ø MAX	 "C" MAX	"H" ±.010/0.25	"D" MIN								
	I91640013	SAA-22-18	I91640014	SAA-22-18T	RED	22-18	.185/4.70	.280/7.11	1.55/39.4	.767/19.48	.059/1.50								
	I91640044	SBB-16-14	I91640045	SBB-16-14T	BLUE	16-14	.195/4.95	.308/7.82	1.55/39.4	.727/18.47	.091/2.31								
	I91640056	SC-12-10	I91640057	SC-12-10T	YELLOW	12-10	.275/6.99	.383/9.73 	1.80/45.7	.800/23.32	.139/3.53 								
	I91640079	 SD-354	---	---	RED	8	.300/7.62	.448/11.38	2.05/52.4	---	.165/4.19								



NOTES,

1. INSULATION MATERIAL; HEAT SHRINKABLE TUBING WITH HOTMELT INNER LINER. SEE CHART FOR COLOR.
2. SEAMLESS TIN PLATED COPPER TERMINAL.
3. PRINTED TEXT IN BLACK APPROXIMATELY .12 (3.0) HIGH.
- (F) 4. PART IS ROHS COMPLIANT. (F)

SALES DRAWING

UPDATE MAX LENGTH		QUALITY SYMBOLS		GENERAL TOLERANCES (UNLESS SPECIFIED)		DIMENSION STYLE IN/MM		SCALE 1:1	DESIGN UNITS INCH	 THIRD ANGLE PROJECTION
IEC NO: WNA2008-0006		▽=0		mm INCH		DRAWN BY DATE		TITLE		
DRW: WNEHRODAHL 2007/12/20		▽=0		4 PLACES ± --- ± ---		BRE 2002/03/22		PERMA-SEAL NIAC BUTT CONNECTORS		
CHKO: JACNEIL 2007/12/20				3 PLACES ± --- ± ---		CHECKED BY DATE				
APPR: JACNEIL 2008/01/08				2 PLACES ± --- ± ---		HEB 2002/03/22				
				1 PLACE ± --- ± ---		APPROVED BY DATE				
				ANGULAR ± ---°		RWD 2002/03/22		 MOLEX INCORPORATED		
				DRAFT WHERE APPLICABLE MUST REMAIN WITHIN DIMENSIONS		MATERIAL NO. SEE CHART		DOCUMENT NO. SD-19164-017		SHEET NO. 1 OF 1
						SIZE B		THIS DRAWING CONTAINS INFORMATION THAT IS PROPRIETARY TO MOLEX INCORPORATED AND SHOULD NOT BE USED WITHOUT WRITTEN PERMISSION		