

4

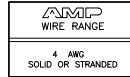
3

2

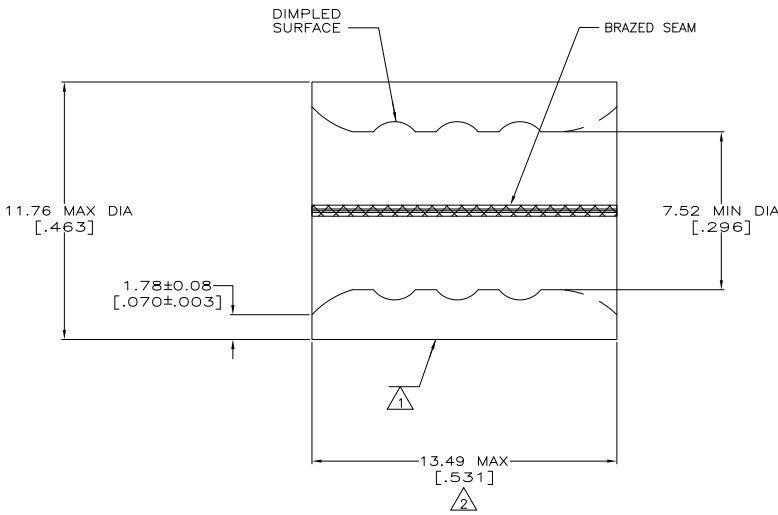
1

THIS DRAWING IS UNPUBLISHED. RELEASED FOR PUBLICATION
 © COPYRIGHT - By - ALL RIGHTS RESERVED.

LOC	DIST	REV	DESCRIPTION	DATE	BY	APPD
G	14	P	LTR			
		H3	REVISED PER ECO-11-004820	11MAR11	RK	HMR



- 1 STAMP AMP 4W* APPROX AS SHOWN
- 2 MAXIMUM LENGTH DOES NOT INCLUDE MANUFACTURING TABS
- 3 MATERIAL: COPPER PER ASTM B152 ANNEALED
- 4 TIN PLATE 0.00254 [.000100] MIN THK PER ASTM B545
- 5 TIN/LEAD (60/40) PLATE, 0.00254 [.000100] MIN THK PER SAE-AMS-P-81728
- 6 UL LISTED E13288, 4 AWG STRANDED
- 7 CSA CERTIFIED LR7189, 4 AWG SOLID OR STRANDED



AMP INCORPORATED CUSTOMER SERVICE SYSTEMS		MAX RECOMMENDED OPERATING TEMPERATURE: 170° C
FOR ADDITIONAL PRODUCT INFORMATION OR COPIES OF DRAWINGS AND TECHNICAL DOCUMENTS	PRODUCT INFORMATION CENTER 1-800-522-6752	VOLTAGE RATING: N/A
FOR APPLICATION	TOOLING ASSISTANCE CENTER 1-800-722-1111	CIRCULAR MIL AREA: 16.8-26.7mm² [33,100-52,600] SOLID OR STRANDED
FOR ORDER ENTRY	1-800-526-5142	THIS DRAWING IS A CONTROLLED DOCUMENT FOR AMP INCORPORATED. IT IS SUBJECT TO CHANGE AND THE CONTROLLING ENGINEERING ORGANIZATION SHOULD BE CONTACTED FOR THE LATEST REVISION.

6 7	20	LOOSE PIECE, BOX	4	8-34320-5
---	---	LOOSE PIECE	5	34320-1
6 7	---	LOOSE PIECE	4	34320
APPROVALS	QTY	PACKAGE TYPE	FINISH	PART NO

THIS DRAWING IS A CONTROLLED DOCUMENT.		DR TA BRINKMAN 4-14-93	TE Connectivity	
DIMENSIONS: INCHES		DR DA PATTERSON 4-14-93	DA PATTERSON 4-14-93	
OTHER DIMENSIONS: METERS		NAME DA PATTERSON	SPLICE, PARALLEL, SOLISTRAND	
MATERIAL		APPLICATION SPEC	SIZE	CAGE CODE
FINISH		HEIGHT	A2	00779
SEE TABLE		CUSTOMER DRAWING	C=34320	RESTRICTED TO
		SCALE	10:1	SHEET 1 of 1 REV H3

1471-9 (3/11)

34320

B

A