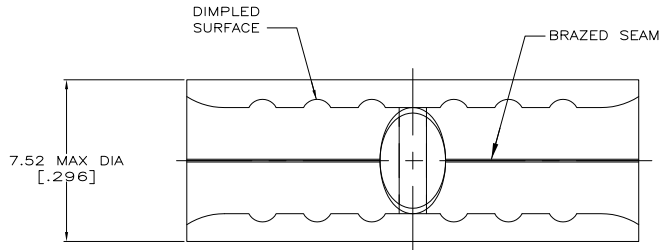


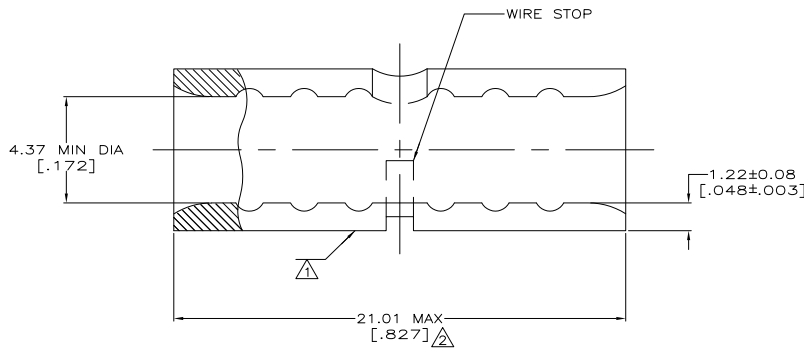
THIS DRAWING IS UNPUBLISHED. RELEASED FOR PUBLICATION. ALL RIGHTS RESERVED.

LOC	REV	DESCRIPTION	DATE	BY	APP
G	14				
	E1	REVISED PER ECO-11-005027	11MAR11	RK	HMR



AMP WIRE RANGE	Listed
8 AWG SOLID OR STRANDED	8 AWG STRANDED
LR7189 Certified	MILITARY P/N AND CLASS
8 AWG SOLID OR STRANDED	NOT APPLICABLE

- △ STAMP AMP 8W* APPROX AS SHOWN
- △ MAXIMUM LENGTH DOES NOT INCLUDE MANUFACTURING TABS



AMP INCORPORATED CUSTOMER SERVICE SYSTEMS		MAX RECOMMENDED OPERATING TEMPERATURE: 170° C MAX
FOR ADDITIONAL PRODUCT INFORMATION OR COPIES OF DRAWINGS AND TECHNICAL DOCUMENTS	PRODUCT INFORMATION CENTER 1-800-522-6752	VOLTAGE RATING: NOT APPLICABLE
FOR APPLICATION TOOLING INFORMATION	TOOLING ASSISTANCE CENTER 1-800-722-1111	WIRE CROSS SECTIONAL AREA RANGE: 6.64-10.5MM² [13,100-20,800] CIR MILS SOLID OR STRANDED
FOR ORDER ENTRY	1-800-526-5142	THIS DRAWING IS A CONTROLLED DOCUMENT FOR AMP INCORPORATED. IT IS SUBJECT TO CHANGE AND THE CONTROLLING ENGINEERING ORGANIZATION SHOULD BE CONTACTED FOR THE LATEST REVISION.

THIS DRAWING IS A CONTROLLED DOCUMENT.		BY TA BRINKMAN 4-5-83	25	LOOSE PIECE, BOX	8-36906-3
DIMENSIONS: mm(INCHES)		CHK DA PATTERSON 4-5-83	---	LOOSE PIECE	36906
TOLERANCES UNLESS OTHERWISE SPECIFIED:		APP DE MILLER 4-5-83	QUANTITY	PACKAGE TYPE	PART NO
MATERIAL: COPPER PER ASTM B-152 ANNEALED		FINISH: TIN PLATE 0.00254(000100) MIN THK PER MIL-1-10727	TE TE Connectivity		
APPLICABLE SPECS:		PRODUCT SPEC: ---	SPLICE, BUTT, SIGHT HOLE, SOLISTRAND™		
WEIGHT: ---		SIZE: A2	CAGE CODE: 00779	DRAWING NO: 36906	RESTRICTED TO: ---
CUSTOMER DRAWING		SCALE: 8:1	SHEET: 1 of 1	REV: E1	

1411-9 (5/11)

36906