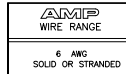
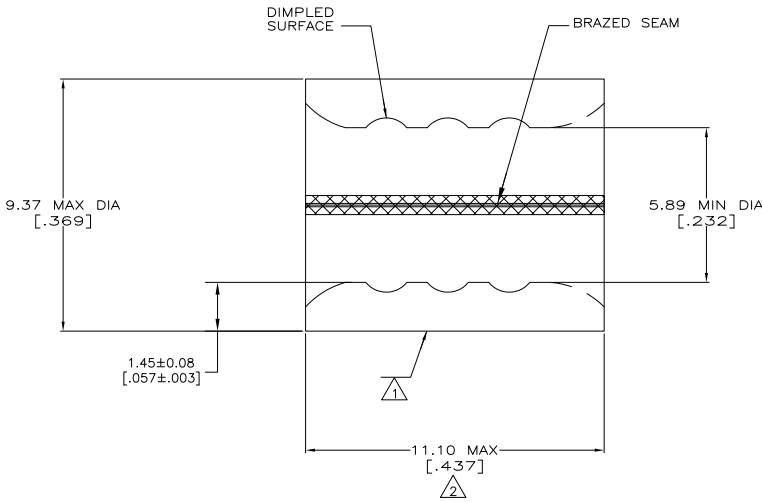


THE DRAWING IS UNPUBLISHED. RELEASED FOR PUBLICATION. ALL RIGHTS RESERVED.

LOC	DEF	REVISIONS			
		REV	DESCRIPTION	DATE	BY
G	14	K5	REVISED PER ECO-11-004917	11MAR11	RK HMR



- 1 STAMP AMP 6W\* APPROX AS SHOWN
- 2 MAXIMUM LENGTH DOES NOT INCLUDE MANUFACTURING TABS
- 3 MATERIAL: COPPER PER ASTM B-152 ANNEALED
- 4 UL LISTED E13288, 6 AWG STRANDED
- 5 CSA CERTIFIED LR7189, 6 AWG SOLID OR STRANDED.



4 5	20	0.00254 [.000100] MIN TIN ASTM B-545	LOOSE PIECE, BOX	8-34319-5
---	---	TIN/LEAD (60/40) 0.00254 [.000100] MIN TIN SAE-AMS-P-81728	LOOSE PIECE	34319-1
4 5	---	0.00254 [.000100] MIN TIN ASTM B-545	LOOSE PIECE	34319
APPROVALS	QTY	FINISH	PACKAGE TYPE	PART NO

AMP INCORPORATED CUSTOMER SERVICE SYSTEMS		MAX RECOMMENDED OPERATING TEMPERATURE: 170° C
FOR ADDITIONAL PRODUCT INFORMATION OR COPIES OF DRAWINGS AND TECHNICAL DOCUMENTS	PRODUCT INFORMATION CENTER 1-800-522-6752	VOLTAGE RATING: N/A
FOR APPLICATION TOOLING INFORMATION	TOOLING ASSISTANCE CENTER 1-800-722-1111	CIRCULAR MIL AREA: 10.5-16.8mm <sup>2</sup> [20,800-33,100] SOLID OR STRANDED
FOR ORDER ENTRY	1-800-526-5142	THIS DRAWING IS A CONTROLLED DOCUMENT FOR AMP INCORPORATED. IT IS SUBJECT TO CHANGE AND THE CONTROLLING ENGINEERING ORGANIZATION SHOULD BE CONTACTED FOR THE LATEST REVISION.

THIS DRAWING IS A CONTROLLED DOCUMENT.		BY TA BRINKMAN 4-14-93	TE Connectivity	
DIMENSIONS: mm(INCHES)		CHK DA PATTERSON 4-14-93	SPLICE, PARALLEL, SOLISTRAND	
TOLERANCES UNLESS OTHERWISE SPECIFIED:		APP DA PATTERSON 4-14-93	SIZE A2	
MATERIAL		FINISH	WEIGHT	RESTRICTED TO
SEE TABLE		CUSTOMER DRAWING	00779	34319

1471-9 (5/11)

34319

A