

4

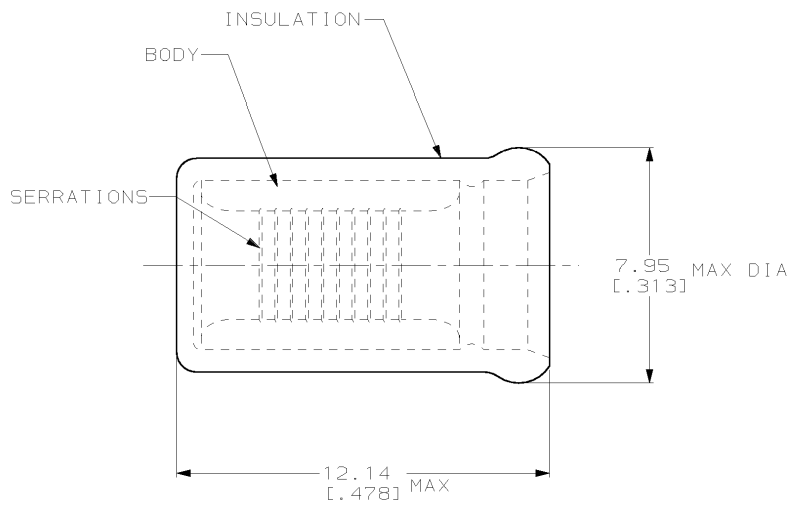
3

2

1

THIS DRAWING IS UNPUBLISHED. RELEASED FOR PUBLICATION .19 . . .  
 © COPYRIGHT 19 BY AMP INCORPORATED. ALL RIGHTS RESERVED.

LOC	DIST	REVISIONS					
		P	LTR	DESCRIPTION	DATE	DWN	APVD
G	14	F		REV PER 063A-0189-00	15MAY00	JR	TM



1. USE FOR STRIPPED (SINGLE) WIRE END ONLY
2. WIRE INSUL DIA, 5.33 [ .210 ] MAX

MS25274/4 CLASS 1 & 2	1000	LOOSE PIECE	328309
MILITARY P/N & CLASS	QTY	PACKAGE TYPE	PART NO

AMP INCORPORATED CUSTOMER SERVICE SYSTEM		MAX RECOMMENDED OPERATING TEMPERATURE: 105°C [221°F]	THIS DRAWING IS A CONTROLLED DOCUMENT FOR AMP INCORPORATED. IT IS SUBJECT TO CHANGE AND THE CONTROLLING ENGINEERING ORGANIZATION SHOULD BE CONTACTED FOR THE LATEST REVISION.		DWN L OLMEDA 21MARG	<b>AMP</b> AMP Incorporated Harrisburg, PA 17105-3608		
FOR ADDITIONAL PRODUCT INFORMATION OR COPIES OF DRAWINGS AND TECHNICAL DOCUMENTS	PRODUCT INFORMATION CENTER 1-800-522-6752	VOLTAGE RATING: -	DIMENSIONS: mm [in]	TOLERANCES UNLESS OTHERWISE SPECIFIED: 0 PLC ±- 1 PLC ±- 2 PLC ±0.20 [ .008 ] 3 PLC ±- 4 PLC ±- ANGLES ±-	CHK M ELLIS 21MARG		NAME K FERREK 21MARG	
FOR APPLICATION TOOLING INFORMATION	TOOLING ASSISTANCE CENTER 1-800-722-1111	CIRCULAR MIL AREA: 2.62mm² - 6.64mm² [5,180 - 13,100]	MATERIAL BODY, CU PER ASTM B152 INSUL, NYLON, COLOR, YELLOW.		FINISH BODY, TIN PLATE PER MIL-T-10727	PRODUCT SPEC -	SPARE WIRE CAP, WIRE SIZE, 12-10 AWG	
FOR ORDER ENTRY	1-800-526-5142				WEIGHT -	SIZE A3	CAGE CODE 00779	DRAWING NO C-328309
CUSTOMER DRAWING						SCALE 8:1	SHEET 1 OF 1	REV F

AMP 1470-19 REV 09MAY94  
 15-MAY-00 08:47:20 amp13469 /home/amp13469/edmod