

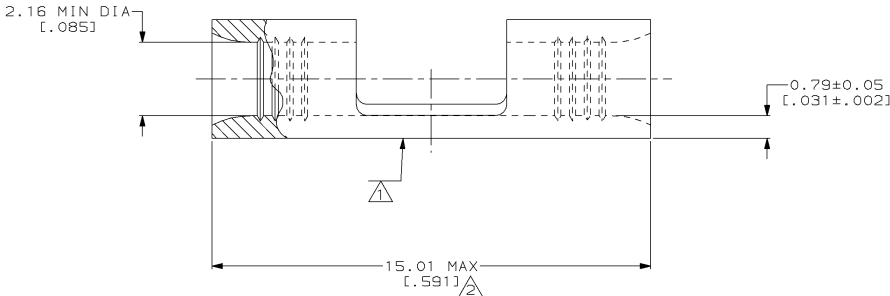
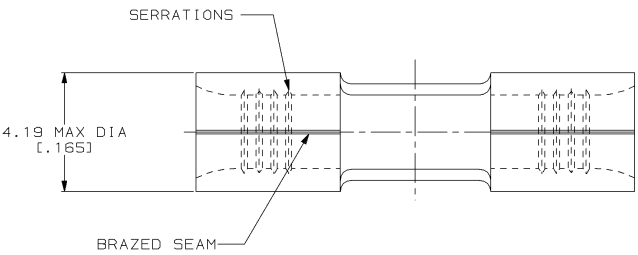
THIS DRAWING IS UNPUBLISHED. RELEASED FOR PUBLICATION .19
 © COPYRIGHT 19 BY AMP INCORPORATED. ALL INTERNATIONAL RIGHTS RESERVED.

LOC	DIST	ZONE	LTR	DESCRIPTION	DATE	APPD	
G	14	P	F	B	REV, RDRW, & SM PKG PER 0720-0040-93	4-13-93	APD

METRIC
 DIMENSIONS LISTED IN mm [INCHES]

AMP WIRE RANGE	UL E13288 Listed
16-14 AWG SOLID OR STRANDED	16-14 AWG SOLID OR STRANDED
CS LR7189 Certified	MILITARY P/N AND CLASS
16-14 AWG SOLID OR STRANDED	NOT APPLICABLE

⚠ STAMP AMP 16-14* APPROX AS SHOWN
 ⚠ MAXIMUM LENGTH DOES NOT INCLUDE
 MANUFACTURING TABS



100	LOOSE PIECE, BOX	8-327025-1
----	LOOSE PIECE	327025
QUANTITY	PACKAGE TYPE	PART NO

**AMP INCORPORATED
 CUSTOMER SERVICE SYSTEMS**

MAX RECOMMENDED OPERATING TEMPERATURE:
 170°C MAX

DO NOT SCALE PRINT.
 UNLESS SPECIFIED
 DIMENSIONS IN INCHES
 TOLERANCES ON:
 2 PLC DEC ± -
 3 PLC DEC ± -
 ANGLES ± -

DR 4-13-93
 TA BRINKMAN
 CHK 4-13-93
 DA PATTERSON
 APPD 4-13-93
 DE MILLER
 APPD 4-13-93
 JL MECKLEY
 PRODUCT SPEC
 -

AMP AMP Incorporated
 Harrisburg, PA 17105-3608

FOR ADDITIONAL
 PRODUCT INFORMATION OR
 COPIES OF DRAWINGS
 AND TECHNICAL DOCUMENTS

PRODUCT INFORMATION CENTER
 1-800-522-6752

VOLTAGE RATING:
 NOT APPLICABLE

MATERIAL
 COPPER PER
 ASTM B-152
 ANNEALED

FINISH
 T1N PLATE
 0.00254 [.000100] MIN
 THK PER MIL-T-10727

NAME
**SPLICE, BUTT,
 STRAP, SOLISTRAND™
 (NO WIRE STOP)**

FOR APPLICATION
 TOOLING INFORMATION

TOOLING ASSISTANCE CENTER
 1-800-722-1111

WIRE CROSS SECTIONAL AREA RANGE:
 1.04-2.62mm² [2,050-5,180] CIR MILS
 SOLID OR STRANDED

THIS DRAWING IS A CONTROLLED DOCUMENT FOR
 AMP INCORPORATED. IT IS SUBJECT TO CHANGE
 AND THE CONTROLLING ENGINEERING ORGANIZATION
 SHOULD BE CONTACTED FOR THE LATEST REVISION.

APPLICATION SPEC
 -

SIZE
 CAGE CODE
00779
 DRAWING NO
C-327025

FOR ORDER ENTRY

1-800-526-5142

SCALE 10:1

WEIGHT -

SHEET 1 OF 1

CUSTOMER DRAWING

327025

A