

4

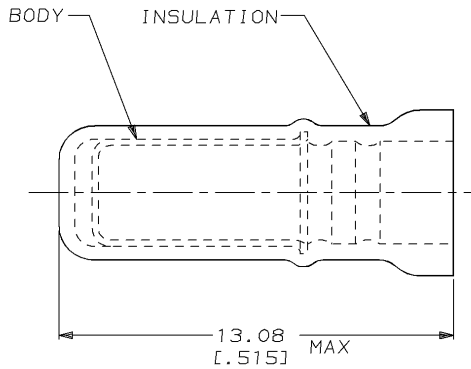
3

2

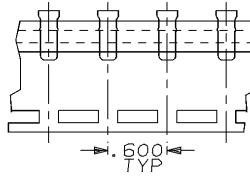
1

THIS DRAWING IS UNPUBLISHED. RELEASED FOR PUBLICATION _____, 19____
 © COPYRIGHT 19____ BY AMP INCORPORATED. ALL RIGHTS RESERVED.

LOC	DIST	REVISIONS					
		P	LTR	DESCRIPTION	DATE	DWN	APVD
G	14	N		REV / REDRAWN / 0720-0482-95 & 0720-0002-95	14FEB95	LO	ME



1. USE FOR AN UNSTRIPPED (SINGLE) WIRE END ONLY
2. WIRE INSUL DIA, 2.03-2.92 [0.080-.115]



SPARE WIRE CAPS ON TAPE
(SCALE 1:1)

QTY	PACKAGE TYPE	PART NO
100	LOOSE PIECE, BOX	8-324485-1
4000	ON TAPE, REEL	2-324485-1
1000	LOOSE PIECE	324485

AMP INCORPORATED CUSTOMER SERVICE SYSTEM	
FOR ADDITIONAL PRODUCT INFORMATION OR COPIES OF DRAWINGS AND TECHNICAL DOCUMENTS	PRODUCT INFORMATION CENTER 1-800-522-6752
FOR APPLICATION TOOLING INFORMATION	TOOLING ASSISTANCE CENTER 1-800-722-1111
FOR ORDER ENTRY	1-800-526-5142

MAX RECOMMENDED OPERATING TEMPERATURE: 105°C [221°F]
VOLTAGE RATING: -
CIRCULAR MIL AREA: -

THIS DRAWING IS A CONTROLLED DOCUMENT FOR AMP INCORPORATED. IT IS SUBJECT TO CHANGE AND THE CONTROLLING ENGINEERING ORGANIZATION SHOULD BE CONTACTED FOR THE LATEST REVISION.	
DIMENSIONS: mm [in]	TOLERANCES UNLESS OTHERWISE SPECIFIED:
	0 PLC ±-
	1 PLC ±-
	2 PLC ±0.20 (0.008)
	3 PLC ±-
	4 PLC ±-
	ANGLES ±-
MATERIAL: BODY, CU PER ASTM B152 INSUL., NYLON, COLOR, RED	FINISH: BODY, TIN PLATE PER MIL-T-10727

DWN L OLMEDA 14FEB95
CHK M ELLIS 14FEB95
APVD T MICHELUTTI 14FEB95
PRODUCT SPEC -
APPLICATION SPEC -
WEIGHT -
CUSTOMER DRAWING

AMP Incorporated Harrisburg, PA 17105-3608		
NAME SPARE WIRE CAP, RED		
SIZE A3	CAGE CODE 00779	DRAWING NO C-324485
SCALE 8:1	SHEET 1 OF 1	REV N

AMP 1470-19 REV 09MAY94
 28 FEB 1995 06:47:04 AMP12360 <UJ128A>DEPT1132-U, DWG1132-U, RBY-U, WIRECAP-U, CUST