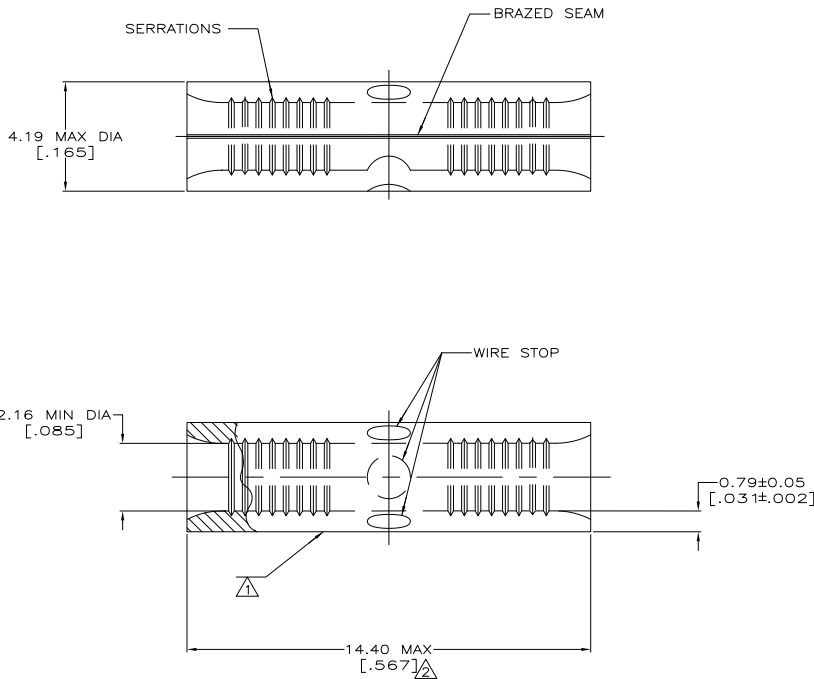


THE DRAWING IS UNPUBLISHED. RELEASED FOR PUBLICATION BY: ALL RIGHTS RESERVED.

LOC	QTY	REV	DESCRIPTION	MS	DATE	OWN	APPD
G	14	J1	REVISED PER ECO-11-004820		11MAR11	RK	HMR



<b>AMP</b> WIRE RANGE 16-14 AWG SOLID OR STRANDED	E13288 Listed 16-14 AWG SOLID OR STRANDED
LR7189 Certified 16-14 AWG SOLID OR STRANDED	MILITARY P/N AND CLASS NOT APPLICABLE

- ⚠ STAMP AMP 16-14\* APPROX AS SHOWN
- ⚠ MAXIMUM LENGTH DOES NOT INCLUDE MANUFACTURING TABS
- ⚠ P/N 8-31819-6 IS NOT UL/CSA APPROVED.

<b>AMP INCORPORATED CUSTOMER SERVICE SYSTEMS</b>		MAX RECOMMENDED OPERATING TEMPERATURE: 170° C MAX
FOR ADDITIONAL PRODUCT INFORMATION OR COPIES OF DRAWINGS AND TECHNICAL DOCUMENTS	PRODUCT INFORMATION CENTER 1-800-522-6752	VOLTAGE RATING: NOT APPLICABLE
FOR APPLICATION TOOLING INFORMATION	TOOLING ASSISTANCE CENTER 1-800-722-1111	WIRE CROSS SECTIONAL AREA RANGE: 1.04-2.62mm <sup>2</sup> [2,050-5,180] CIR MILS SOLID OR STRANDED
FOR ORDER ENTRY	1-800-526-5142	THIS DRAWING IS A CONTROLLED DOCUMENT FOR AMP INCORPORATED. IT IS SUBJECT TO CHANGE AND THE CONTROLLING ENGINEERING ORGANIZATION SHOULD BE CONTACTED FOR THE LATEST REVISION.

5 PCS/BAG	LOOSE PIECE, BAG	⚠ 8-31819-6
100	LOOSE PIECE, BAG	8-31819-5
2500	LOOSE PIECE, BOX	8-31819-1
----	ON TAPE	2-31819-1
----	LOOSE PIECE	31819
QUANTITY	PACKAGING TYPE	PART NO

THIS DRAWING IS A CONTROLLED DOCUMENT.		BY: TA BRINKMAN 4-13-93	TE Connectivity	
DRAWN: DA PATTERSON 4-13-93		CHK: DA PATTERSON 4-13-93	MFG: DE MILLER 4-13-93	
DIMENSIONS: mm [INCHES]		TOLERANCES UNLESS OTHERWISE SPECIFIED:		
Ø PUC	± .005	PRODUCT SPEC	SIZE: A2	
Ø PUC	± .005	APPLICATION SPEC	CAGE CODE: 00779	
Ø PUC	± .005	WEIGHT	DRAWING NO: 31819	
Ø PUC	± .005	MATERIAL: COPPER PER ASTM B-152 ANNEALED	CUSTOMER DRAWING	
Ø PUC	± .005	FINISH: TIN PLATE 0.0025(±.000150) MIN THK PER MIL-1-10722	SCALE: 1:0.1	
RESTRICTED TO			SHEET: 1 of 1	
REV: J1				

141-9 (3/11)

31819