

4

3

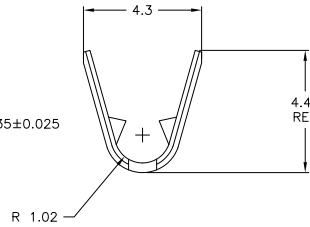
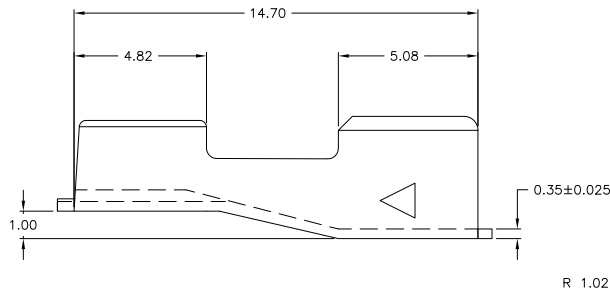
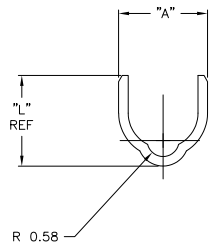
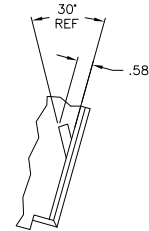
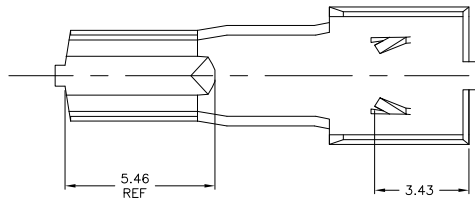
2

1

THIS DRAWING IS UNPUBLISHED. RELEASED FOR PUBLICATION. BY TYCO ELECTRONICS CORPORATION. ALL RIGHTS RESERVED.

LOC	DIST	REVISIONS					
AF	50	F	LN	DESCRIPTION	DATE	BY	APPD
		E		REV PER 063A-0696-03	04NOV03	JR	GP
		E1		REVISED PER ECO-10-000443	18JAN10	KK	HMR

- 1 INSULATED HEATER WIRE: #18-16 AWG. HEATER WIRE CORE DIA: 1.02 MAX
- 2 REF CRIMP INFO: WIRE BBL .090, F TYPE INSULATION BBL J20, F TYPE
- ⚠ TRAVERSE WINDING ON METAL REEL.
- ⚠ IN-LINE WINDING ON A CARDBOARD REEL
- ⚠ OBSOLETE PARTS: OBSOLETE CIS STREAMLINING PER D.RENAUD/D.SINISI



⚠ OBSOLETE	5,000	4.44	3.8	⚠	#14-12 AWG	-	1438246-5
	5,000	3.18	3.3	⚠	#18-16 AWG	-	1438246-4
	7,500	4.44	3.8	⚠	#14-12 AWG	-	1438246-3
	5,000	3.18	3.3	⚠	#18-16 AWG	PRE-TIN	1438246-2
	12,500	3.18	3.3	⚠	#18-16 AWG	-	1438246-1

THIS DRAWING IS A CONTROLLED DOCUMENT.		DRN	JR_RUTH	21MAY2002	Tyco Electronics Corporation Harrisburg, PA 17105	
DIMENSIONS:		CHK	G_PORTA	21MAY02	SPLICE, BUTT, HEATER WIRE	
TOLERANCES UNLESS OTHERWISE SPECIFIED:		APPD	G_PORTA	21MAY02	NAME	
0 PLC	±	APPROVAL			SIZE	
1 PLC	±	PRODUCT SPEC			CASE CODE	
2 PLC	±	APPLICATION SPEC			DRAWING NO	
3 PLC	±	WEIGHT			A2 00779 C=1438246	
4 PLC	±	FINISH			RESTRICTED TO	
ANGLES	±				CUSTOMER DRAWING	
MATERIAL	081M BRASS	SEE TABLE			SCALE 10:1 SHEET 1 OF 1 REV E1	

AMP 1471-9 REV 31MM2000

C:\ENGapps\TECacad\4.0\bin\

1438246

A