

4

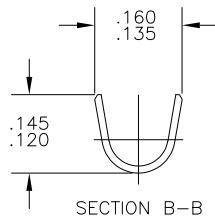
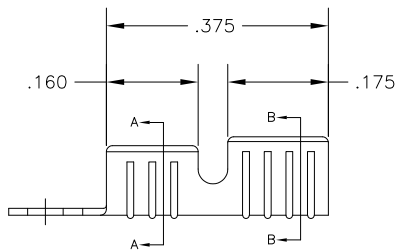
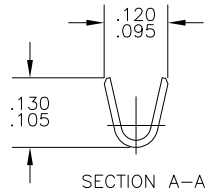
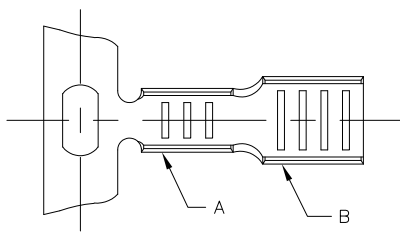
3

2

1

THIS DRAWING IS UNPUBLISHED. RELEASED FOR PUBLICATION  
 © COPYRIGHT - BY TYCO ELECTRONICS CORPORATION. ALL RIGHTS RESERVED.

LOC	DIST	REVISIONS			
P	LTR	DESCRIPTION	DATE	DWN	APVD
AF	50	H5	REVISED PER ECR-07-031129	28DEC07	HMR GP



- 1 PRODUCT PROVIDED IN STRIP FORM REEL, BREAKS MAY BE PRESENT
- 2 REELING DIRECTION FOR THRU OR BUTT TYPE SPLICE APPLICATOR
- 3 REELING DIRECTION FOR PIGTAIL TYPE SPLICE APPLICATOR
- 4 WIRE RANGE BARREL A: 975-2700 CMA  
INSULATION RANGE BARREL B: .080 - .115 DIA
- 5 REF. CRIMP INFO:  
BARREL A - .080 "F"  
BARREL B - .120 "O"
- 6 PRELIMINARY - NOT FOR PRODUCTION.

2	18 - 16	.100 DIA	.012 ST STEEL - NONE	6	61021-4
4	-	-	.012 STEEL - NICKEL		61021-3
2	<del>18 - 16</del>	<del>.100 DIA</del>	<del>.012 BRASS - NONE</del>		<del>61021-2</del>
2	18 - 16	.100 DIA	.012 STEEL - NICKEL		61021-1
	WIRE SIZE AWG BARREL "A"	WIRE SIZE HEATER WIRE BARREL "B"	MATERIAL AND FINISH		PART NO

THIS DRAWING IS A CONTROLLED DOCUMENT.		DWN RAGHAVENDRA 21NOV2006	Tyco Electronics Corporation Harrisburg, PA 17105-3608	
DIMENSIONS: INCHES	TOLERANCES UNLESS OTHERWISE SPECIFIED:	CHK G.D.PORTA	NAME G.D.PORTA	
	0 PLC ± -	APVD G.D.PORTA	PRODUCT SPEC	
	1 PLC ± -		APPLICATION SPEC	
	2 PLC ± -		SIZE	
	3 PLC ± .015		CAGE CODE	
4 PLC ± -		DRAWING NO		RESTRICTED TO
ANGLES ± 1° 0'		WEIGHT		
MATERIAL SEE TABLE	FINISH SEE TABLE	A3 00779 C-61021		
CUSTOMER DRAWING		SCALE 6:1	SHEET 1 of 1	REV H5