

4

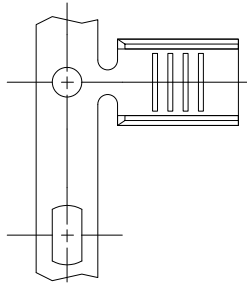
3

2

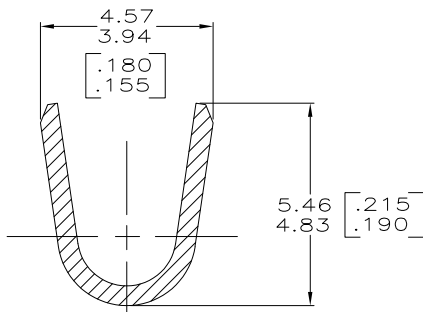
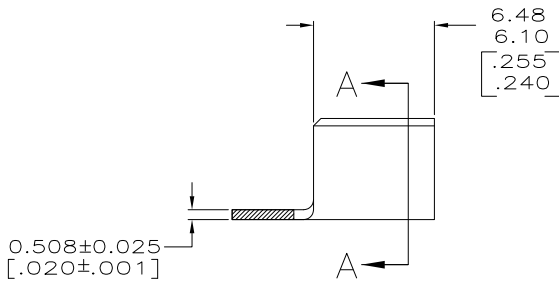
1

THIS DRAWING IS UNPUBLISHED. RELEASED FOR PUBLICATION
 © COPYRIGHT - By - ALL RIGHTS RESERVED.

LOC	DIST	REVISIONS			
P	LTR	DESCRIPTION	DATE	DWN	APVD
AF	50	P1	REVISED PER ECO-11-004917	11MAR11	RK HMR



- 1 PRODUCT PROVIDED IN STRIP FORM ON REELS; BREAKS MAY BE PRESENT
- 2 SPLICE FREE REELING
- 3 WIRE RANGE FOR NEW APPLICATIONS: 4000-9000 CMA (WIRE RANGE APPROVED FOR APPLICATIONS IMPLEMENTED PRIOR TO 2005: 3000-8400 CMA).
- 4 CRIMP WIDTH = .140 F TYPE
CRIMP HEIGHT (±.002) = (TOTAL CMA + 14,400) / 223,100.
- 5 PRODUCT LUBRICANT APPLICATOR AVAILABLE FOR TE CONNECTIVITY TERMINATION EQUIPMENT MAY BE REQUIRED TO FACILITATE CRIMPING
- 6 PRELIMINARY - NOT FOR PRODUCTION.



SECTION A-A
SCALE 10:1

TIN	H00 COPPER		△6 485043-7
	-		-
	-		-
NICKEL	T3 STEEL		485043-4
OBSOLETE	-TIN T3 STEEL-		485043-3
TIN	H04 BRASS		485043-2
△2	- H04 BRASS		485043-1
FINISH	MATERIAL	WIRE RANGE	PART NO.

THIS DRAWING IS A CONTROLLED DOCUMENT.		DWN 11/MAY/95 CHK PHILLIP M. FORTNEY	TE Connectivity	
DIMENSIONS: INCHES		APVD 11/MAY/95 MARK BARNABA	NAME	
TOLERANCES UNLESS OTHERWISE SPECIFIED:		PRODUCT SPEC		
0 PLC ± -	1 PLC ± -	APPLICATION SPEC		
2 PLC ± 0.25 [010]	3 PLC ± -	SIZE CAGE CODE DRAWING NO		
4 PLC ± -	ANGLES ± -	RESTRICTED TO		
MATERIAL SEE TABLE	FINISH SEE TABLE	114-2088	A3 00779 C-485043	-
CUSTOMER DRAWING		SCALE 5:1	SHEET 1 of 1	REV P1