

4

3

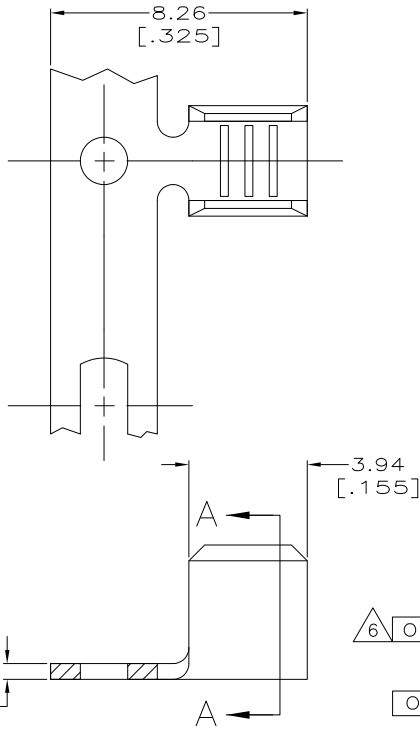
2

1

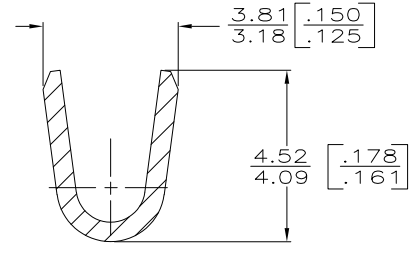
THIS DRAWING IS UNPUBLISHED. RELEASED FOR PUBLICATION  
 © COPYRIGHT - By - ALL RIGHTS RESERVED.

LOC		DIST		REVISIONS			
P	LTR	DESCRIPTION		DATE	DWN	APVD	
AF	50	L2		REVISED PER ECO-11-004820	11MAR11	RK	HMR

6 OBSOLETE PARTS: OBSOLETE CIS STREAMLINING PER D.RENAUD/D.SINISI



- 1 PRODUCT PROVIDED IN STRIP FORM ON REELS, BREAKS MAY BE PRESENT.
- 3 CRIMP WIDTH, .110 F TYPE  
CRIMP HEIGHT (±.002) = ( TOTAL CMA + 11,300 ) / 176,700
- 4 PRELIMINARY - NOT FOR PRODUCTION.
- 5 WIRE RANGE FOR NEW APPLICATIONS: 1500-5000 CMA (WIRE RANGE APPROVED FOR APPLICATIONS IMPLEMENTED PRIOR TO 2005: 1970-4940 CMA).



MATERIAL	FINISH	REELING	WIRE RANGE	PART NUMBER
1010 STEEL	NICKEL			63130-8
HO2 COPPER-NICKEL	NONE			63130-7
HO2 PHOS BRONZE	TIN	REVERSE	-	63130-4
082 BRASS	NONE	-STANDARD-	-	63130-3
OBSOLETE				63130-2
OBSOLETE				63130-1

THIS DRAWING IS A CONTROLLED DOCUMENT.

DIMENSIONS: INCHES	TOLERANCES UNLESS OTHERWISE SPECIFIED:	DWN PHILLIP M. FORTNEY 17/JAN/96		TE Connectivity	
	0 PLC ± -	CHK JEFF R RUTH 17/JAN/96			
	1 PLC ± -	APVD DENNIS SCHWENK 17/JAN/96			
	2 PLC ± 0.25 [010]	NAME			
	3 PLC ± -	PRODUCT SPEC			
	4 PLC ± -	APPLICATION SPEC	SPLICE		
	ANGLES ± -	114-2088	SIZE	CAGE CODE	DRAWING NO
MATERIAL SEE TABLE	FINISH SEE TABLE	WEIGHT	A3	00779	C-63130
		CUSTOMER DRAWING	SCALE	8:1	SHEET 1 OF 1 REV L2