

4

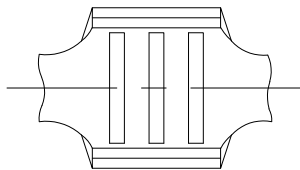
3

2

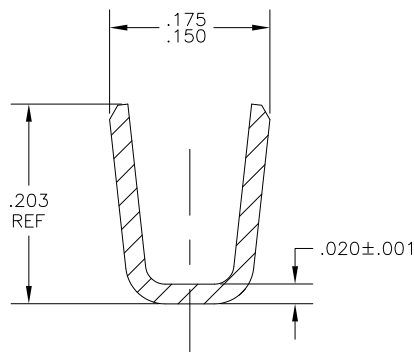
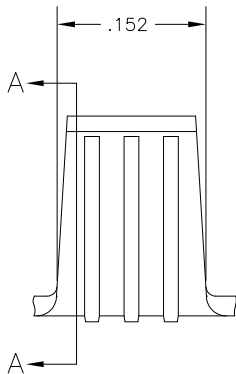
1

THIS DRAWING IS UNPUBLISHED. RELEASED FOR PUBLICATION
 © COPYRIGHT - BY TYCO ELECTRONICS CORPORATION. ALL RIGHTS RESERVED.

LOC	DIST	REVISIONS			
P	LTR	DESCRIPTION	DATE	DWN	APVD
D		REVISED PER ECR-08-030838	30MAR09	HMR	GP



- 1 PRODUCT PROVIDED IN STRIP FORM ON REELS, BREAKS MAY BE PRESENT.
- 2 WIRE RANGE: 3300 TO 9000 CMA
- 3 CRIMP WIDTH: .140, "F" TYPE
 CRIMP HEIGHT $(\pm .002) = (\text{TOTAL CMA} + 14,600) / 223,200$
 FOR APPLICATOR INFORMATION CALL: 1-800-722-1111
 FOR PRODUCT INFORMATION CALL: 1-800-522-6752



SECTION A-A

40552
 PART NO

THIS DRAWING IS A CONTROLLED DOCUMENT.		DWN RAGHAVENDRA 18JAN07	Tyco Electronics Corporation Harrisburg, Pa 17105-3608																			
DIMENSIONS: INCHES		CHK G.D.PORTA 18JAN07	NAME SPLICE																			
TOLERANCES UNLESS OTHERWISE SPECIFIED:		APVD G.D.PORTA 18JAN07	RESTRICTED TO																			
<table border="1"> <tr><td>0</td><td>PLC</td><td>± -</td></tr> <tr><td>1</td><td>PLC</td><td>± -</td></tr> <tr><td>2</td><td>PLC</td><td>± -</td></tr> <tr><td>3</td><td>PLC</td><td>± .010</td></tr> <tr><td>4</td><td>PLC</td><td>± -</td></tr> <tr><td colspan="2">ANGLES</td><td>± -</td></tr> </table>		0	PLC	± -	1	PLC	± -	2	PLC	± -	3	PLC	± .010	4	PLC	± -	ANGLES		± -	PRODUCT SPEC -	APPLICATION SPEC 114-2088	SIZE A3
0	PLC	± -																				
1	PLC	± -																				
2	PLC	± -																				
3	PLC	± .010																				
4	PLC	± -																				
ANGLES		± -																				
MATERIAL BRASS	FINISH TIN	WEIGHT -	CAGE CODE 00779	DRAWING NO C-40552																		
CUSTOMER DRAWING			SCALE 10:1	SHEET 1 OF 1																		
			REV D																			