

4

3

2

1

THIS DRAWING IS UNPUBLISHED.

RELEASED FOR PUBLICATION

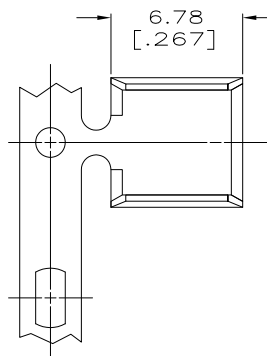
COPYRIGHT - By -

ALL RIGHTS RESERVED.

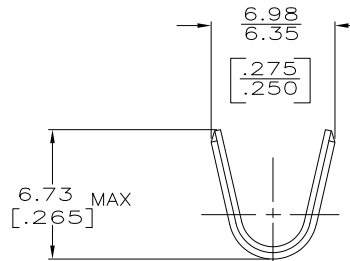
LOC  
AF 50

REVISIONS

P	LTR	DESCRIPTION	DATE	DWN	APVD
E1		REVISED PER ECO-11-004917	11MAR11	RK	HMR



- 1 PRODUCT PROVIDED IN STRIP FORM ON REELS;  
BREAKS MAY BE PRESENT
- 2 REF CRIMPING INFO:  
4.57 [0.180] CRIMP WIDTH AT CRIMP HEIGHT = ( CMA+23,100 ) /285,700  
5.58 [0.220] CRIMP WIDTH AT CRIMP HEIGHT = ( CMA+24,500 ) /330,000
- 3 REF SIMILAR SLICE P/N 1217967-X WITH SERRATIONS



0.635±0.025  
[0.025±0.001]


TIN	2.5-8.1mm <sup>2</sup>	63625-2
	5,000-16,000 CMA	63625-1
FINISH	WIRE RANGE	PART NO

THIS DRAWING IS A CONTROLLED DOCUMENT.

DIMENSIONS:	TOLERANCES UNLESS OTHERWISE SPECIFIED:
INCHES	
0 PLC	± -
1 PLC	± -
2 PLC	± 0.25 [010]
3 PLC	± -
4 PLC	± -
ANGLES	± -



MATERIAL: BRASS  
FINISH: SEE TABLE

DWN P FORTNEY 10/3/91	 TE Connectivity		NAME
CHK MS FEHER 10/4/91			
APVD R WEAVILL 10/4/91	PRODUCT SPEC		SPLICE
APPLICATION SPEC	114-2088	SIZE A3	CAGE CODE 00779
WEIGHT		DRAWING NO C-63625	RESTRICTED TO
CUSTOMER DRAWING	SCALE 5:1	SHEET 1 of 1	REV E1

1470-19 (3/11)