

4

3

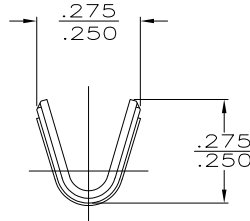
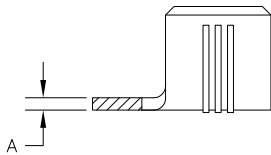
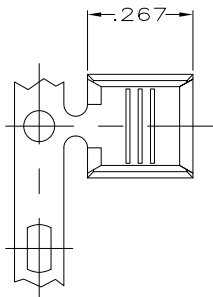
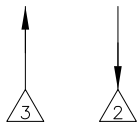
2

1

THIS DRAWING IS UNPUBLISHED. RELEASED FOR PUBLICATION
 © COPYRIGHT - By - ALL RIGHTS RESERVED.

LOC	DIST	REVISIONS			
P	LTR	DESCRIPTION	DATE	DWN	APVD
AF	50	S1	REVISED PER ECO-11-005027	11MAR11	RK HMR

REELING OFF TOP
OF REEL
WIRE BARREL UP



- 1 PRODUCT PROVIDED IN STRIP FORM ON REELS; BREAKS MAY BE PRESENT
- 2 STANDARD REELING.
- 3 REVERSE REELING.
- 4 CRIMP WIDTH: .180 F TYPE
 CRIMP HEIGHT: $(\pm.002) = (\text{TOTAL CMA} + 28,300) / 289,800$
 FOR APPLICATOR INFORMATION CALL: 1-800-722-1111
 FOR PRODUCT INFORMATION CALL: 1-800-522-6752
- 5 WIRE RANGE FOR NEW APPLICATIONS: 7000-12,000 CMA
 (WIRE RANGE APPROVED FOR APPLICATIONS IMPLEMENTED
 PRIOR TO 2005: 9000-16,000 CMA).

3	.031±.001	5	TIN	STEEL	61299-8
			NONE	BRASS	61299-3
2	.032±.001		TIN	STEEL	61299-2
	.031±.001				61299-1
REELING	A	CMA WIRE SIZE	FINISH	MATERIAL	PART NUMBER

THIS DRAWING IS A CONTROLLED DOCUMENT.

DIMENSIONS:	TOLERANCES UNLESS OTHERWISE SPECIFIED:
INCHES	
0 PLC	± -
1 PLC	± -
2 PLC	± -
3 PLC	± .010
4 PLC	± -
ANGLES	± -



MATERIAL SEE TABLE

FINISH SEE TABLE

DWN	19DEC2002
CHK	MICHAEL S. FEHER
APVD	19DEC2002
NAME	GARY PORTA
PRODUCT SPEC	GARY PORTA
APPLICATION SPEC	
WEIGHT	114-2088
CUSTOMER DRAWING	

TE TE Connectivity

SPLICE

SIZE	CAGE CODE	DRAWING NO	RESTRICTED TO
A3	00779	C-61299	-
SCALE	4:1	SHEET	1 OF 1
REV	S1		