

4

3

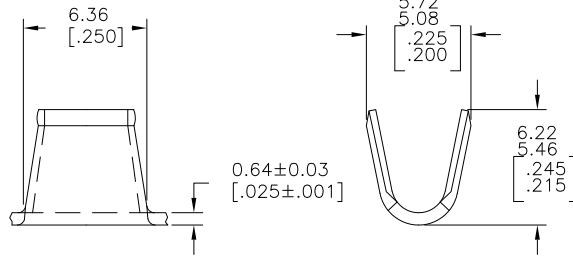
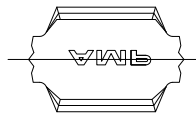
2

1

THIS DRAWING IS UNPUBLISHED. RELEASED FOR PUBLICATION
 © COPYRIGHT - By - ALL RIGHTS RESERVED.

LOC	DIST	REVISIONS			
P	LTR	DESCRIPTION	DATE	DWN	APVD
AF	50				
	A2	REVISED PER ECR-11-006644	05APR11	HMR	GJ

- CONTINUOUS STRIP ON REELS
- WIRE RANGE FOR NEW APPLICATIONS: 3.75-5.07mm²[7400-10,000CMA]
(WIRE RANGE APPROVED FOR APPLICATIONS IMPLEMENTED PRIOR TO 2005: 4000-10,000 CMA).
- CRIMP WIDTH: 4.57[.180]F TYPE. CRIMP HEIGHT IN INCHES (+/- .002)=(TOTAL CMA OF WIRES + 20044)/288890.



62357-1

PART NO

THIS DRAWING IS A CONTROLLED DOCUMENT.		DWN	ir_ruth	24NOV04			
		CHK	G_PORTA	24NOV04			
		APVD	G_PORTA	24NOV04			
		PRODUCT SPEC					
DIMENSIONS: mm [INCHES] TOLERANCES UNLESS OTHERWISE SPECIFIED: 0 PLC ± - 1 PLC ± - 2 PLC ± 0.25[.010] 3 PLC ± - 4 PLC ± - ANGLES ± 5°		NAME		SPLICE			
MATERIAL: TEMP 1 BTRASS		APPLICATION SPEC: 114-2088		SIZE: A3	CAGE CODE: 00779	DRAWING NO: 62357	RESTRICTED TO: -
CUSTOMER DRAWING				SCALE: 1:1	SHEET: 1 of 1	REV: A2	