

4

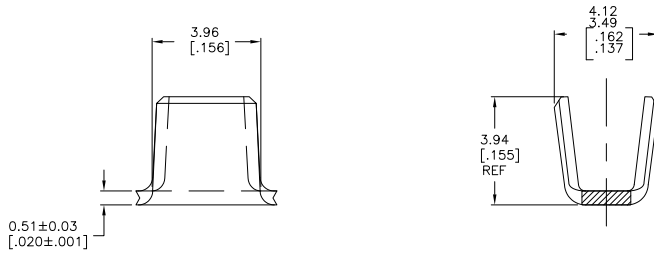
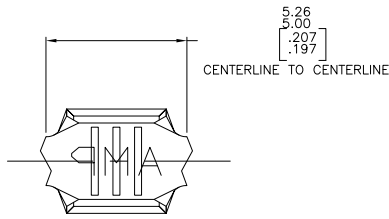
3

2

1

THIS DRAWING IS UNPUBLISHED. RELEASED FOR PUBLICATION  
 © COPYRIGHT - By - ALL RIGHTS RESERVED.

LOC	DIST	REVISIONS			
F	LNK	DESCRIPTION	DATE	BY	APP'D
AF	50				
	K3	REVISED PER ECR-11-006644	05APR11	HMR	GJ



- 1 CONTINUOUS STRIP ON REELS.
- 2 TIN PLATE OVER COPPER UNDERPLATE.
- 3 WIRE RANGE FOR NEW APPLICATIONS: 1.27-2.38mm<sup>2</sup>[2500-4700 CMA]  
(WIRE RANGE APPROVED FOR APPLICATIONS IMPLEMENTED PRIOR TO 2005: 2000-5300 CMA).
- 4 OBSOLETE PARTS: OBSOLETE CIS STREAMLINING PER D.RENAUD/D.SINISI
- 5 CRIMP WIDTH: 3.05[.120] F TYPE. CRIMP HEIGHT IN INCHES (+/- .002)=(TOTAL CMA OF WIRES + 12240)/220000.

4	OBSOLETE		H02 COPPER NICKEL		3	3	61492-3
			082 BRASS		3	3	<del>61492-2</del>
			082 BRASS		3	3	61492-1
FINISH		MATERIAL		WIRE RANGE		PART NUMBER	
THIS DRAWING IS A CONTROLLED DOCUMENT. DW MICHAEL S. FEHR Q0MAR2000 CHK Q0MAR2000							
DIMENSIONS: mm [INCHES]		TOLERANCES UNLESS OTHERWISE SPECIFIED		STEVE HEADER STEVE HEADER PRODUCT SPEC		TE Connectivity	
0 PLG ± - 1 PLG ± - 2 PLG ± - 3 PLG ± - 4 PLG ± - ANGLES ± -		0.25±0.010		APPLICATION SPEC: 114-2058		SPLICE	
MATERIAL SEE TABLE		FINISH SEE TABLE		SIZE CASE CODE DRAWING NO A2 00779 C=61492		RESTRICTED TO -	
CUSTOMER DRAWING				SCALE 10:1		SHEET 1 of 1 REV K3	

1471-9 (3/11)

61492

A