

4

3

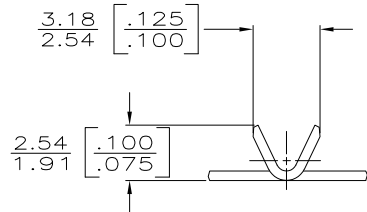
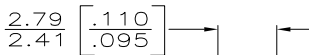
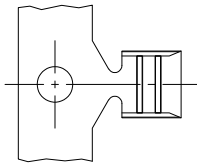
2

1

THIS DRAWING IS UNPUBLISHED. RELEASED FOR PUBLICATION
 © COPYRIGHT - By - ALL RIGHTS RESERVED.

LOC	DIST	REVISIONS			
P	LTR	DESCRIPTION	DATE	DWN	APVD
	R1	REVISED PER ECO-11-004917	11MAR11	RK	HMR

- PRODUCT PROVIDED IN STRIP FORM ON REELS; BREAKS MAY BE PRESENT
-
-
- WIRE SIZE IS 0.2-0.6mm sq.
 [400 & 1300] CMA
 CRIMP WIDTH:: 1.78 [.070] , F TYPE
 CRIMP HEIGHT ± 0.05 [.002] = (TOTAL CMA + 4700) / 112,100
 FOR APPLICATOR INFO CALL, 1-800-722-1111
 FOR PRODUCT INFO CALL: 1-800-522-6752
- WIRE RANGE FOR NEW APPLICATIONS: 400-1300 CMA
 (WIRE RANGE APPROVED FOR APPLICATIONS IMPLEMENTED
 PRIOR TO 2005: 400-1600 CMA).



	NONE	0.41[.016]	STAINLESS STEEL	62759-5
OBSOLETE	TIN	0.41[.016]	STEEL	62759-4
OBSOLETE	NICKEL	0.41[.016]	CRS	62759-3
	TIN	.041[.016]	BRASS	62759-2
	NONE	.041[.016]	BRASS	62759-1
	FINISH	MATERIAL		P/N

THIS DRAWING IS A CONTROLLED DOCUMENT.		DWN	9/14/90		
		CHK	9/24/90		
		APVD	9/24/90		
		NAME			
DIMENSIONS:	TOLERANCES UNLESS OTHERWISE SPECIFIED:	SPLICE			
INCHES		APPLICATION SPEC			
	0 PLC ± -	114-2088			
	1 PLC ± -	WEIGHT -			
	2 PLC ± 0.38[.015]	SIZE	CAGE CODE	DRAWING NO	RESTRICTED TO
	3 PLC ± -	A3	00779	C-62759	-
	4 PLC ± -	CUSTOMER DRAWING			
	ANGLES ± -	SCALE	SHEET	REV	
MATERIAL	FINISH	6:1	1 of 1	R1	
SEE TABLE	SEE TABLE				