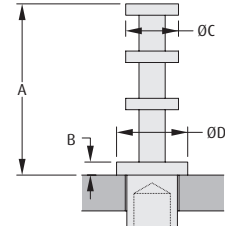
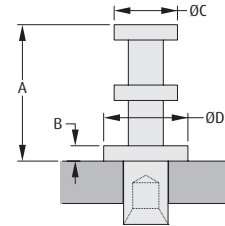
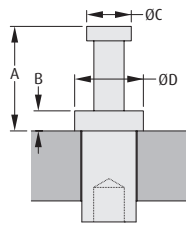


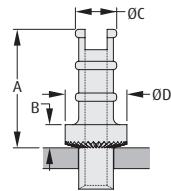
PCB Terminals

Turned Terminals

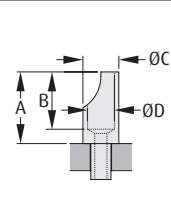
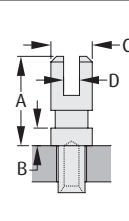
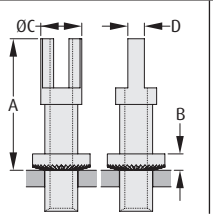
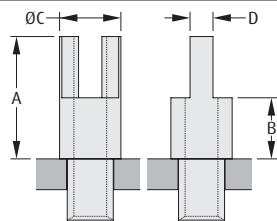
- ❖ Material: brass with tin plating.
- ❖ For swaging tool change order code to prefix Z and suffix 00 (example Z2174-00).
- ❖ Contact technical@harwin.com for alternative finishes and custom designs.



ORDER CODE	H9001-01	H9004-01	H2121-01	H9020-01	H9021-01
A	2.39mm	4.74mm	5.15mm	7.65mm	7.65mm
B	0.46mm	1.19mm	0.58mm	0.58mm	0.58mm
C	Ø1.02mm	Ø1.91mm	Ø2.39mm	Ø2.36mm	Ø2.36mm
D	Ø1.57mm	Ø3.18mm	Ø3.18mm	Ø3.18mm	Ø3.18mm
PANEL THICKNESS	1.6mm	1.6mm	1.6mm	1.6mm	2.4mm
MOUNTING HOLE Ø	Ø1.25-1.33mm	Ø2.01-2.09mm	Ø1.69-1.74mm	Ø2.35-2.45mm	Ø2.35-2.45mm



ORDER CODE	H2071Z01	H2072-01	H2072Z01	H2072ZL1	H2073Z01	H2074Z01
A	9.12mm	6.35mm	6.52mm	6.52mm	9.12mm	8.74mm
B	1.78mm	1.07mm	1.24mm	1.24mm	1.78mm	1.60mm
C	Ø3.18mm	Ø3.25mm	Ø2.54mm	Ø2.54mm	Ø3.18mm	Ø4.57mm
D	Ø4.75mm	Ø3.96mm	Ø3.96mm	Ø3.96mm	Ø4.75mm	Ø6.35mm
PANEL THICKNESS	2.4mm	1.6mm	1.6mm	2.4mm	3.2mm	3.2mm
MOUNTING HOLE Ø	Ø2.68-2.78mm	Ø2.17-2.27mm	Ø2.01-2.11mm	Ø2.01-2.11mm	Ø2.68-2.78mm	Ø3.93-4.03mm



ORDER CODE	H2051-01	H2055-01	H2039-01	H9023-01	H9026-01
A	4.78mm	6.35mm	12.71mm	3.96mm	6.35mm
B	2.39mm	3.17mm	1.58mm	0.78mm	5.08mm
C	Ø3.18mm	Ø3.18mm	Ø3.96mm	Ø1.83mm	Ø3.18mm
D	0.79mm	1.19mm	1.60mm	0.71mm	Ø2.39mm
THROUGH HOLE Ø	Ø1.02mm	Ø1.70mm	Ø2.18mm	n/a	Ø1.09mm
PANEL THICKNESS	1.6mm	2.4mm	3.2mm	1.6mm	2.4mm
MOUNTING HOLE Ø	Ø1.60-1.68mm	Ø2.40-2.48mm	Ø3.19-3.27mm	Ø1.28-1.38mm	Ø1.84-1.94mm

www.harwin.com

All dimensions in mm.



HARWIN

PCB TERMINALS