

DRAWING MADE IN THIRD ANGLE PROJECTION

3

2

1 Loc G DIST 86

© COPYRIGHT 1975 BY AMP INCORPORATED, HARRISBURG, PA.
ALL INTERNATIONAL RIGHTS RESERVED. AMP INCORPORATED PRODUCTS
COVERED BY U. S. AND FOREIGN PATENTS AND/OR PATENTS PENDING.

UNPUBLISHED COPY NOT TO BE REPRODUCED OR TRANSMITTED IN ANY FORM OR BY ANY MEANS WITHOUT WRITTEN PERMISSION OF AMP INCORPORATED.

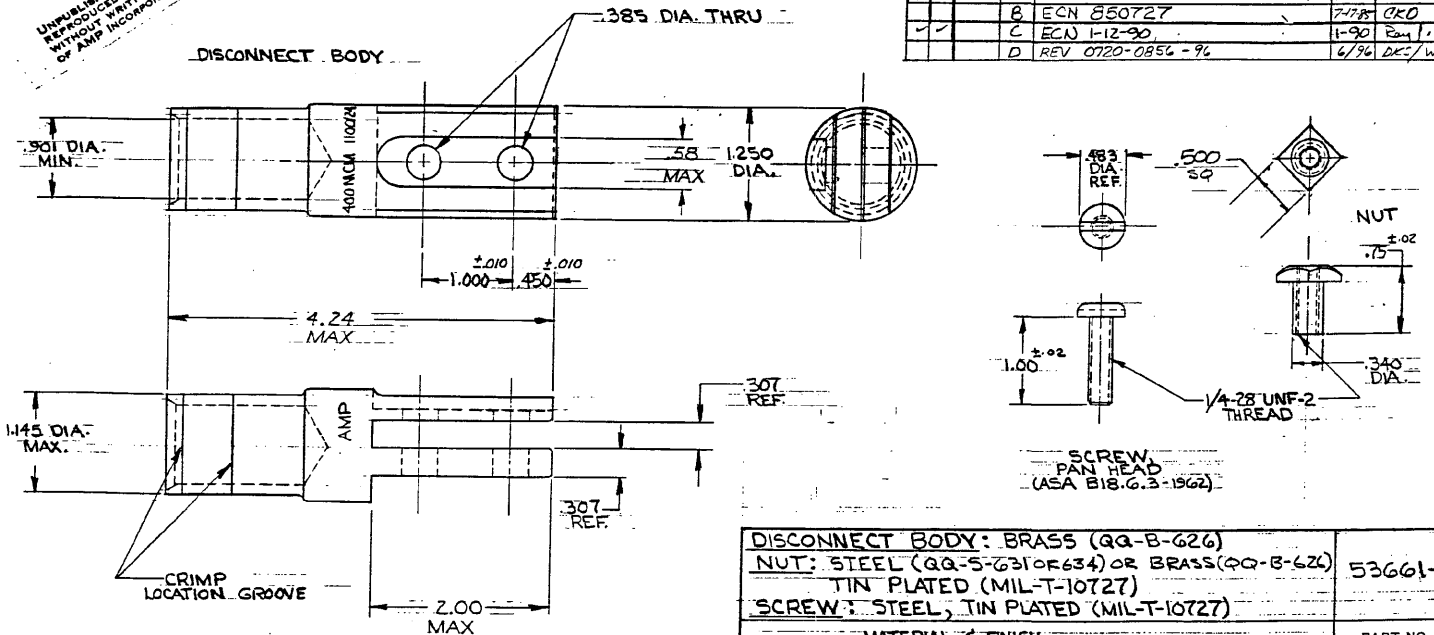
REVISIONS						
P	F	ZONE	LTR	DESCRIPTION	DATE	APPROVED
		0		NPS 74-0542	RCM	10-20-75
		A		REV U-1037	DP	10/20/75
		B		ECN 850727		7-17-80 OKD
		C		ECN 1-12-90		1-90 Rm 1
		D		REV 0720-0856-96		6/96 DEC/WTY

D

C

B

A



NOTE:

1. ASSEMBLY CONSISTS OF ONE (1) EACH DISCONNECT BODY, SCREW, & NUT

DISCONNECT BODY: BRASS (QQ-B-626)		NUT: STEEL (QQ-S-631 OR 634) OR BRASS (QQ-B-626)		53661-1
TIN PLATED (MIL-T-10727)		SCREW: STEEL, TIN PLATED (MIL-T-10727)		
MATERIAL & FINISH				PART NO.
UNLESS OTHERWISE SPECIFIED DIMENSIONS ARE IN INCHES. TOLERANCES ON: DECIMALS ±.008 ANGLES ±5°	CONTRACT NO. OR CHK 10/20/75 10-20-75	AMP INCORPORATED Harrisburg, Pa.		
MATERIAL SEE ABOVE	APPD R. Hoffman 10/3/75	NAME WIRE TERMINAL AMPOWER DISCONNECT BOLTED WIRE SIZE: 400 MCM		
FINISH SEE ABOVE	OTHER APPD 10/20/75	SIZE B	CODE IDENT NO. 00779	DRAWING NO. 53661
SCALE 1:1		SHEET 1 OF 1		

AMP 1470-18 (7-73)

CUSTOMER DRAWING