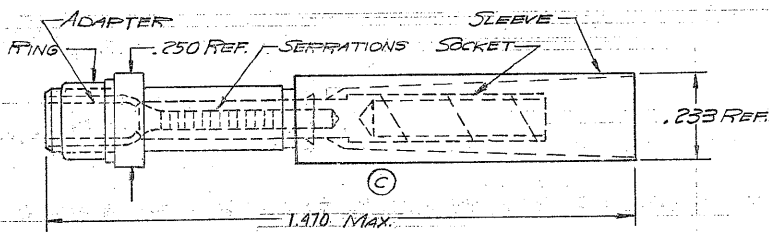


© 1967 BY AMP INCORPORATED. ALL RIGHTS RESERVED. AMP PRODUCTS COVERED BY PATENTS AND/OR PATENTS PENDING.

REVISIONS				
SYM	ZONE	DESCRIPTION	DATE	APPROVAL
B		REDRAWN; ADDED MIL SPECS	6/16/64	8/MS
C		ADDED I.D. LINES TO PIN END OF SOCKET	6/16/64	7/MS
D		REV PER EGN PL-10084	3-18-63	7/MS
E		REV 10 GID-0031-99	3-9-99	176/58



1. .054-.094 WIRE INSULATION DIA

QTY	PART OR IDENTIFYING NO.	NOMENCLATURE OR DESCRIPTION	MATERIAL AND FINISH
		SLEEVE	NYLON (MIL-M-20693) COLOR: NATURAL
		ADAPTER	NATURAL
1	327833-1	FING	COPPER (ASTM B 152) TIN PL (ASTM B 545) TYPE I COLOR: GREEN
		SOCKET	BRASS (ASTM B 121) GOLD PL (MIL-G-45204) TYPE II .000050 MIN EXT. THK OVER NICKEL PL (QQ-N-290).000030 MIN EXT. THK
LIST OF MATERIALS OR PARTS LIST			
UNLESS OTHERWISE SPECIFIED DIMENSIONS ARE IN INCHES TOLERANCES ON FRACTIONS DECIMALS ANGLES		SIGNATURE	DATE
± .005 ± .008 ± 5°		DR R.H. Wolfe	6/16/64
MATERIAL		CHK A. Soltes	6/16/64
SEE TABLE		DSGN ENGR	
HEAT TREAT		APPD [Signature]	6/16/64
FINISH		DSGN APPD	
SEE TABLE		OTHER APPD	
AMP INFO		AMP INCORPORATED HARRISBURG, PENNSYLVANIA	
LOC	PRINT	NAME	
G	1410	SEALD HELICON DISCONNECT SOCKET	
FINISH		WIRE SIZE: 22-20	
		CODE IDENT NO	SIZE NUMBER
		00779	B 327833
		SCALE 4-1	WT .059 CALC ACTUAL SHEET 1 OF 1