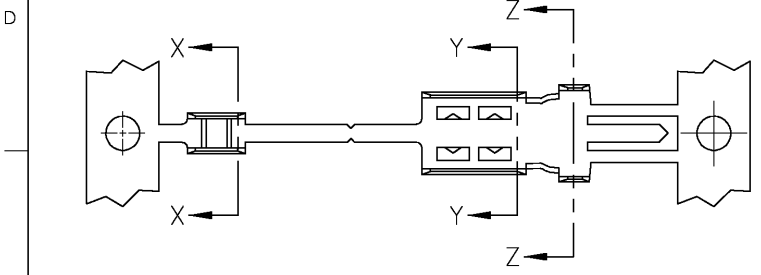
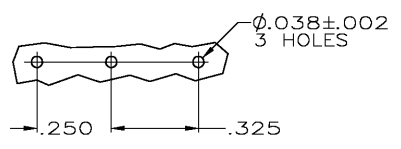
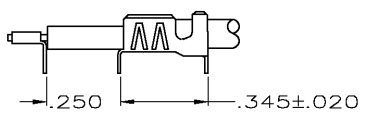
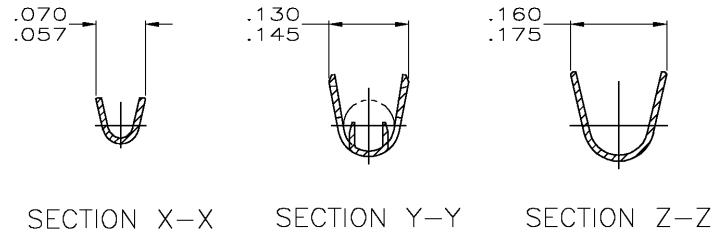
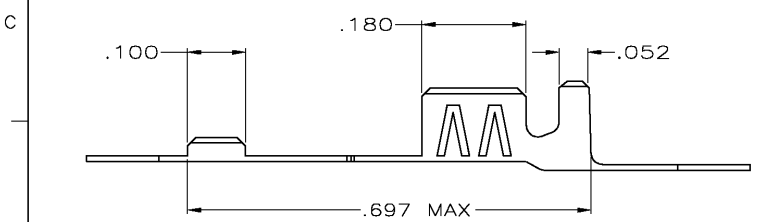


THIS DRAWING IS UNPUBLISHED. RELEASED FOR PUBLICATION .19
 © COPYRIGHT 19 BY AMP INCORPORATED. ALL RIGHTS RESERVED.

LOC	DIST	REVISIONS				
P	LTR	DESCRIPTION	DATE	DWN	APVD	
AJ	16	L	ADDED -90 PER OS14-0310-03.	14JUL03	JGH	JGH



- ACCEPTS COAX CABLE WITH .095-.110 O.D. JACKETS, .055-.065 DIELECTRIC O.D., AND #26-#28 CENTER CONDUCTOR.
- TIN-LEAD PLATE PER MIL-P-81728 OVER NICKEL PLATE PER QQ-N-290.
- TIN PLATE PER ASTM B 545 OVER NICKEL PLATE PER QQ-N-290.
- INSTRUCTION SHEET NO.: 408-2472-2.



P.C. BOARD LAYOUT

3	9-226177-0
2	226177-2
FINISH	PART NUMBER

THIS DRAWING IS A CONTROLLED DOCUMENT.		DWN	M. O'BRINE	18FEB00	AMP Incorporated Harrisburg, PA 17105-3608
DIMENSIONS: INCHES		CHK	J. LIPPERT	18FEB00	
TOLERANCES UNLESS OTHERWISE SPECIFIED:		APVD	J. LIPPERT	18FEB00	NAME AMP TERMINAL, PCB, COAXIAL, BRAID-PIC
0 PLC ±-		PRODUCT SPEC			
1 PLC ±-		APPLICATION SPEC			SIZE
2 PLC ±-		WEIGHT			CAGE CODE
3 PLC ±.008		CUSTOMER DRAWING			DRAWING NO
4 PLC ±-		SCALE	6:1		RESTRICTED TO
ANGLES ±- ±-		SHEET	1 OF 1		REV
MATERIAL	BRASS MIL-C-50	FINISH			
			A3	00779	226177

AMP 1470-19 REV 11JUN87 Translated 030710.090042 (YYMMDD.HHMMSS) from Computervision, Inc., Medusa Revision 12.2.5T
 18-FEB-00 11:19:30 amp06572/home/amp06572/edrimod